
1975 ANNUAL REPORT



**SUFFOLK
COUNTY
WATER
AUTHORITY**





Authority Members

Walter C. Hazlitt, Chairman

William A. Frankenbach

Matthew B. Kondenar, Secretary

H. Ward Ackerson

Hermon L. Bishop, Treasurer and Assistant Secretary

Louis W. Weinfurt, General Manager

John H. Scheetz, Executive Secretary

William J. Schickler, Assistant General Manager and Chief Engineer

Herbert C. Koehler, Assistant General Manager, Distribution

Bernard T. Hanrahan, Assistant General Manager, Commercial Office Operations

Eugene Sidoti, Controller

N.F. Fenn, Resident Engineering Consultant

Homer F. Gardner, Resident Engineering Consultant

William V. Burnell and Associates, Consulting Engineer

Stone & Webster Engineering Corporation, Advisory Engineers

United States Trust Company of New York, Fiscal Agent

Price Waterhouse & Co., Independent Accountants

R.W. Pressprich & Co. Incorporated, Financial Advisors

Chairman's Letter

Water Authority operations during the 12-month period covered by this report continued the upward trend established over the past 24 years of operation despite the general business recession which drastically reduced home and commercial development throughout Suffolk County. Fiscal 1975 saw Authority revenues reach a new all time high of \$18,866,000 for a 1.59 times debt-service coverage for the 12-month period.

The fiscal year covered by the report saw the acquisition of four private water companies under the Authority's continuing program which is aimed at the establishment of a single integrated water-distribution system for all of Suffolk County. Since the original acquisition in 1951, the Authority has acquired 25 public and private water-distribution systems under this acquisition program at a total cost of \$21,635,000.

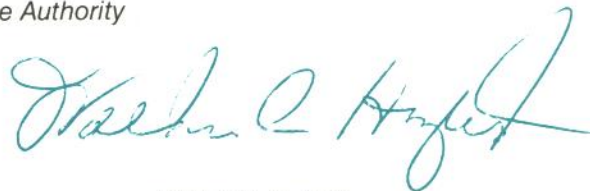
Acquired during 1975 were the Ronkonkama Water Co., Inc., the Shinnecock Shores water facilities, the Selden Water Company, Inc., and the Amagansett Water Company, Inc., at a cost of \$1,346,000. These companies were serving a total of 2,619 customers through water systems comprised of 36 miles of water mains, 9 wells, and 247 hydrants.

As a result of the constantly spiraling operating and construction costs, the Authority instituted its second rate adjustment since 1958. Effective September 1, 1975, rates will be increased on excess water used over the minimum an average of 24 percent. This rate adjustment was necessitated by an estimated 65 percent increase in overall operating expenses, continued increases in the cost of money needed to continue the Authority's construction program, and the need to provide adequate revenue to protect the Authority's financial structure. The Authority's excellent financial position, which has earned it a Moody's Investor Service Rating of A-1 and a Standard and Poor's A-plus rating, will be extended by the new rate increase until about the year 1977, when, according to Stone & Webster Management Consultants, Inc., a new rate review may be necessary.

As a result of the Authority's concern for protecting Suffolk's water resources, the Authority has continued its participation with the Suffolk County Department of Environmental Control, the U.S. Geological Survey, and the Town of East Hampton in the South Fork Water Resources Study. In addition, the agreement with the Department of Environmental Control and the U.S. Geological Survey, to continue water studies and monitoring projects of Suffolk's water resources which have been underway for several years, was renewed.

All projections covering the Authority's operations for the next fiscal year and for the next five-year period indicate a continued upward trend of revenues and operations, as well as the continued excellent financial structure the Authority has experienced for the past 24 years.

For the Members of the Authority

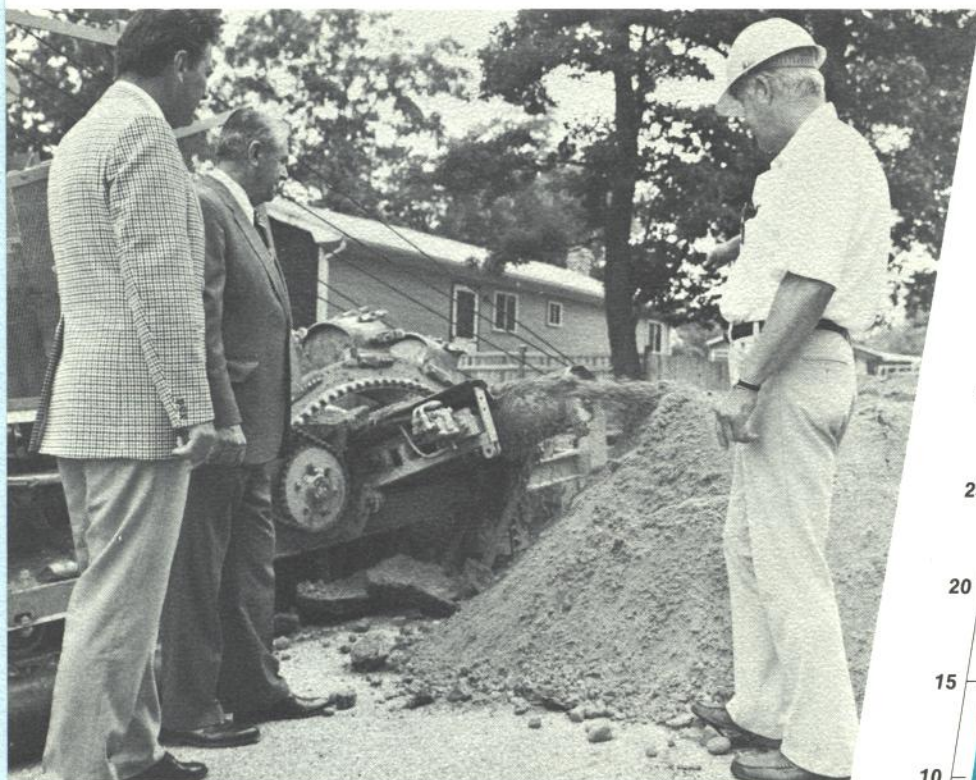


Walter C. Hazlitt

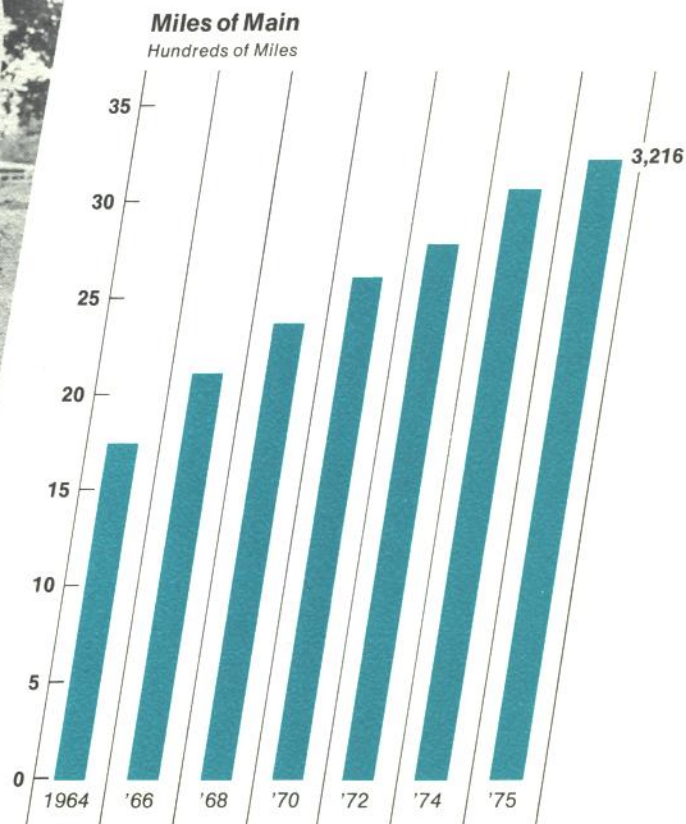
Highlights

YEAR ENDED MAY 31

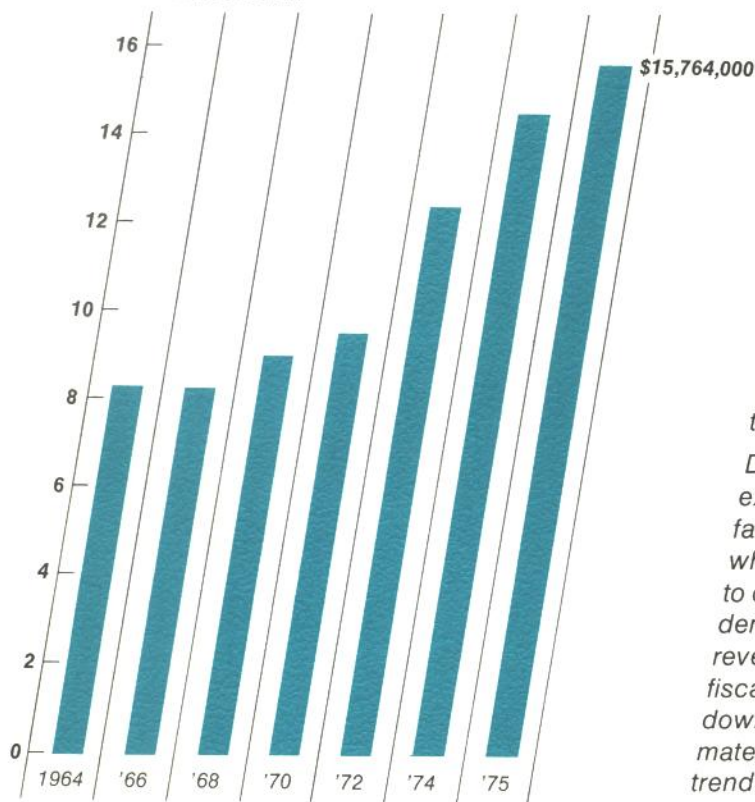
	1975	1974
Revenues	\$ 18,866,000	\$ 17,709,000
Operating and Maintenance Expense, except depreciation	9,400,000	7,533,000
Interest on Bonds and Notes; including amortization of debt discount and expense	4,608,000	4,251,000
Depreciation	2,032,000	1,867,000
Revenues Invested in Facilities for the year	2,826,000	4,058,000
Revenues Invested in Facilities (since June 1, 1951)	41,468,000	38,642,000
Total Water Plant at Cost	184,624,000	168,860,000
Net Additions to Water Plant	15,764,000	14,502,000
Customers (Active Services)	212,356	202,464
Miles of Mains in Service	3,216	3,066
Fire Hydrants in Service	20,523	19,593
Water Production (Million Gallons)	30,983	29,634



During 1975 the Authority added either through acquisition or installation a total of 150 miles of main to its system totaling 3,216 miles of main.



Net Additions to Plant
Millions of Dollars



Review of the Year's Operations

Fiscal 1975 saw a continuation of the Authority's excellent financial condition as evidenced by revenues before interest and depreciation; namely revenues available for debt service, which stood at \$9,466,000 or 1.59 times the debt service for the 12-month period.

At the close of the period, the Authority was supplying water service to a total of 212,356 customers, up from 202,464 at the close of fiscal 1974. Not included in the above were four water districts which purchase water from the Authority. These districts had approximately 8,600 customers as of May 31, 1975, for a combined total number of customers receiving water produced by the Authority of 220, 956.

During the period covered by this report, the Authority expended \$15,990,000 for construction of water-service facilities. The drastic increase in construction costs which the Authority had to face during the period in order to continue a sufficient growth to meet the continuing demands for water service contributed to a decline in net revenues from last year's all time high of \$10,176,000. As fiscal 1975 ended the Authority noticed a slight downward trend in prices contained in bids received for materials and construction commitments; and if this trend continues, expenditure ratios for construction and operation activities for 1976 should show a corresponding decline.

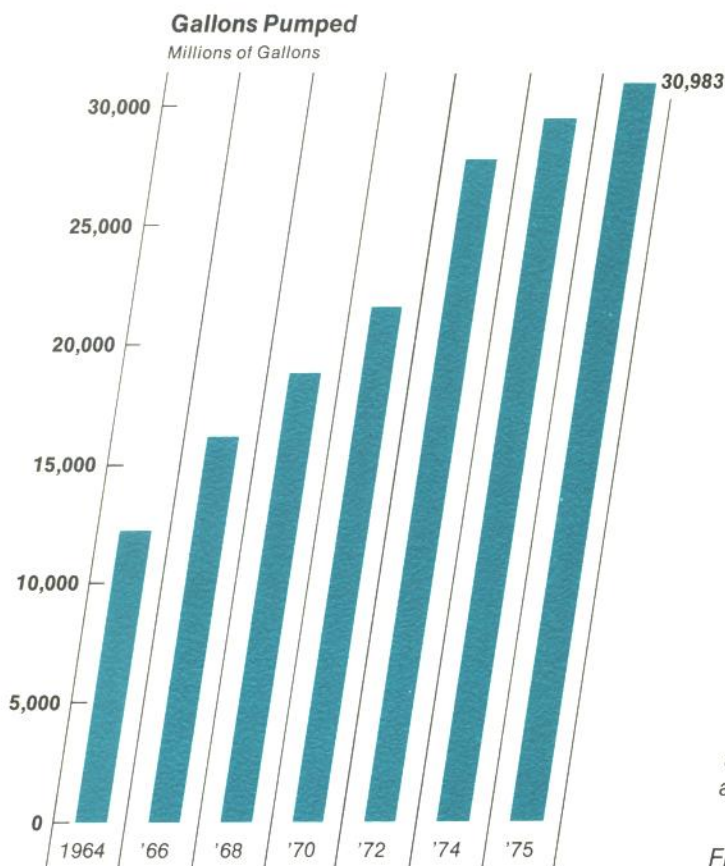
Revenues for the year reached an all time high of \$18,866,000.

The Authority experienced a decline in the number of requests for water service from developers of both residential and commercial facilities during the period. This decline is credited to the general business recession and decline in the construction industry experienced nationally as a result of the period of economic readjustment just experienced.

All conservative projections of the Authority's operations for the next five-year period point to a continuation of the upward trend established since its inception. This continued growth pattern is attributed to the fact that approximately 94 percent of the Authority's customers represent single family dwellings, and the continued technological advances in labor-saving, water-consuming appliances and products are expected to provide for a steady increase in water consumption on the part of the average American family.

New Construction

During fiscal 1975 the Authority added 27 wells and 10 pumping stations to its system, increasing its pumping capacity by approximately 44.5 million gallons per day.



Field inspection of paint job on two-million-gallon standpipe at Peconic Street is conducted by Authority Chairman Walter C. Hazlitt and General Manager Louis W. Weinfurt.

Five fully-automated, diesel-engine-driven generator sets for standby electric power were installed at five separate stations during the fiscal year. These five units can generate a total of 1,750 kilowatts of electrical energy to operate all well pump motors at their respective pump stations in the event of a power failure.

An old, obsolete, 334,000-gallon standpipe, located at Hurtin Boulevard in Smithtown, was demolished during fiscal 1975. A new one-million-gallon elevated tank (water-spheroid design), 145 feet to overflow, is being constructed at this site, at an approximate cost of \$800,000. This new water-storage facility will be in service in the spring of 1976.

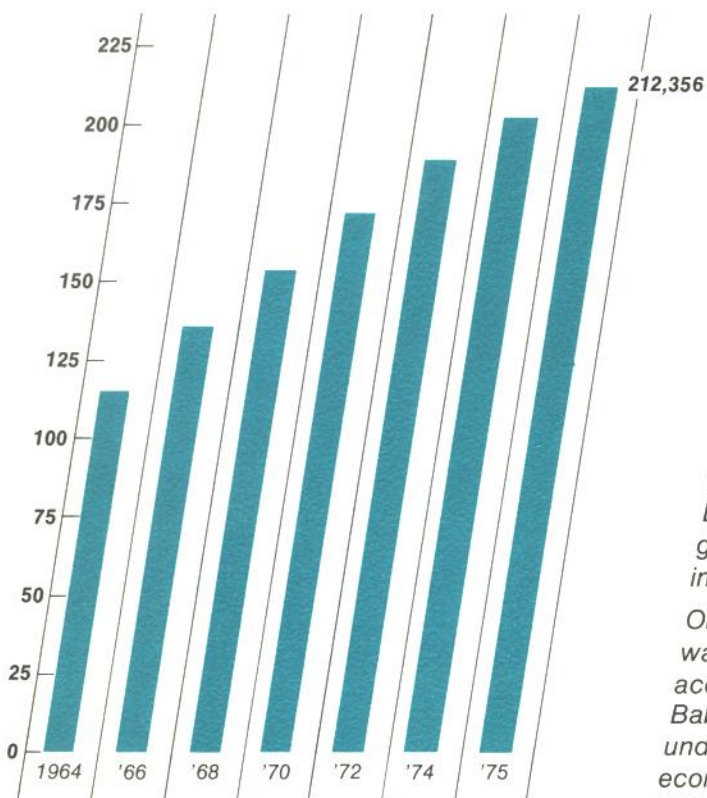
As the year ended, preparations were underway to construct a new water-storage reservoir on East Moriches-Riverhead Road in the Westhampton District, to serve the Eastern Campus of the Suffolk County Community College.

Management and Personnel

Several changes also occurred in the operating staff brought about by the retirement on September 1, 1974, of Norman P. Easton, who had served as Manager of our Patchogue District office since 1952. Mr. Easton, upon retirement, had completed 36 years' service in the water-supply industry. Richard S. Reilly, who served as Manager of the Port Jefferson District since 1971, was

Active Services

Thousands



transferred to the Patchogue District office. Mr. Reilly was employed in 1956 and has held various managerial positions since 1961.

Named to the Manager's position in the Port Jefferson office was James J. Rhatigan, formerly Manager of the Smithtown District office. Mr. Rhatigan has been an employee of the Authority since 1966.

Named to the Manager's position in the Smithtown office was John A. Schucht, formerly Manager of the Southampton and East Hampton District offices. Mr. Schucht has been employed with the Authority since 1958.

Mr. Ronald P. Blake, a Management Trainee with the Authority and formerly Office Manager for the Montauk Water Supply Corporation, was designated Manager of the Southampton and East Hampton District offices. Mr. Blake is a resident of Montauk, Long Island, and a graduate of Albany Business College, where he majored in Accounting and Business Administration.

On December 1, 1974, the Amityville Commercial Office was consolidated with the Babylon Office and all accounts and customer services were transferred to the Babylon District. Merging of these two offices was undertaken by the Authority in order to institute economies in operating costs in commercial-office operations and will in no way hamper efficiency. The newly enlarged Babylon Office is now the largest commercial-office operation in the Authority's county-wide operation.



Recharge of the underground water reservoir through the spray irrigation of sewage disposal study being conducted by Brookhaven National Laboratory for the Town of Brookhaven is nearing completion. The Authority is participating in the study helping to search for scientific data and information that could lead to instituting an effective method of sewage effluent recharge to the underground reserves.

The Authority's three-year collective bargaining agreement with Local No. 393, Utility Workers' Union of America, entered its second year, and the terms of the agreement which provided for a wage increase of six and one-half percent were implemented. The Authority's relations with its employees continued throughout the year on the customary basis of respect and confidence.

As is customary with the Authority, increases were made for personnel not covered by the agreement. Appropriate upward revisions in salaries were also made for those on the managerial and supervisory staff.

At year's end a total of 435 personnel were employed by the Authority.

Acquisitions

The Authority continued working towards its long-range goal of establishing a single-integrated, publicly-owned, water-distribution system for all Suffolk during the year, by acquiring four privately-owned water companies, at a total cost of \$1,346,000.

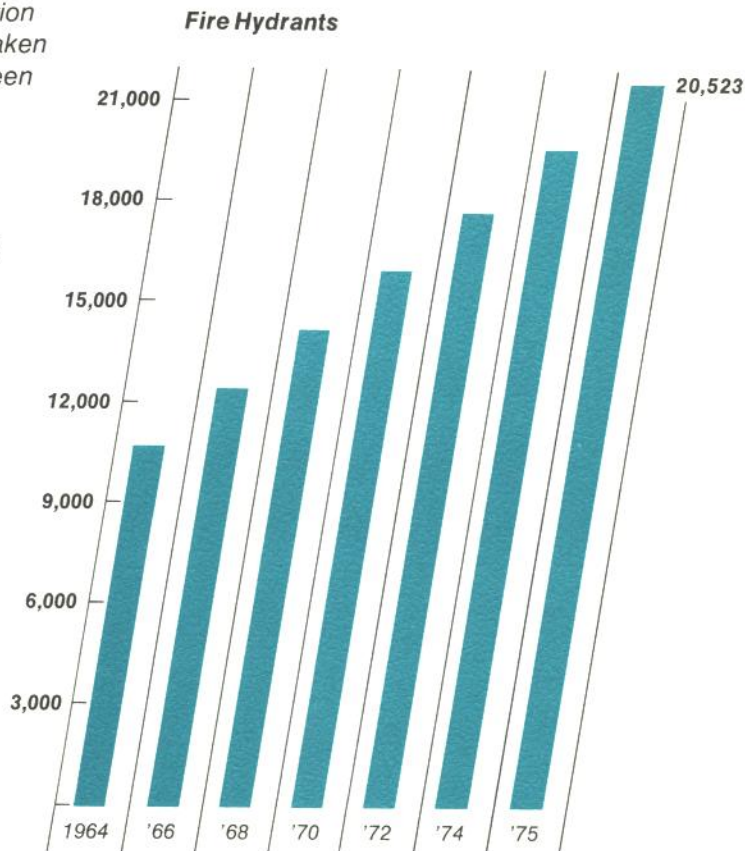
The first acquisition during the period saw the 145 customers of the Ronkonkama Water Company join the growing family of satisfied Suffolk County Water Authority customers. The Authority expended a total of \$52,000 to acquire the Ronkonkama system which included two miles of main.

In October of 1974, the Shinnecock Shores Association abandoned its franchise area and its facilities were taken over by the Authority. Approximately \$100,000 has been expended by the Authority to integrate these facilities into its system. At the acquisition, Shinnecock Shores was serving a total of 244 customers from one well through two miles of water mains.

The third acquisition undertaken by the Authority during the fiscal period saw the Selden Water Company, Inc., become part of the Authority's system. At acquisition Selden was serving some 1,142 customers through a distribution system of 14 miles of main, 2 pumping stations, and 2 wells. Selden provided fire-protection services for the community through 107 fire hydrants which were taken over by the Authority. The total acquisition costs for the Selden Company stood at \$742,000.

In May the Authority took over operation of the Amagansett Water Company, Inc., at an acquisition cost of \$452,000. Amagansett was serving a total of 1,088 customers through 18 miles of main from 4 wells, 2 pumping stations, and there were 140 fire hydrants.

Negotiations are continuing with several of the remaining private companies, as well as with representatives of several public-water supplies, which may lead to the eventual acquisition by the Authority of these companies.





A new 12-inch main, to provide an additional source of supply to the Stony Brook Water District which purchases water wholesale from the Authority, was completed and installed during fiscal 1975.

Financial Review

A \$15,000,000 financing program was undertaken, under which plans were formulated to provide sufficient funds for new construction and expansion during the balance of the fiscal year, as well as for the 1975-76 budgeted construction program. Resolutions were adopted on January 27, 1975, authorizing the issuance of \$15,000,000 Series "P" Bonds and Notes in anticipation thereof. On April 16, 1975, \$6,000,000 of Series "P" Bond Anticipation Notes, due October 15, 1975, were sold at an average annual interest rate of 6.40%.

On July 30, 1975, two competitive bids were received and \$15,000,000 Series "P" Bonds were sold at an average interest cost of 7.8912%. These Bonds are dated June 1, 1975 and mature serially to 2010. The proceeds are to be used to retire the \$6,000,000 Series "P" Bond Anticipation Notes; to provide a debt-service reserve; to pay legal, administrative and incidental expenses of the issue; and to pay into the New Construction Fund approximately \$6,900,000.

All Bonds of the Authority are rated A-1 by Moody's Investors Service, Inc., and A+ by Standard & Poor's. Such ratings indicate recent upward revisions from the A ratings previously given by both rating agencies.

PLANT FACILITIES

Service Areas Or Plants	Wells In Service		Pumping Plants Capacity—1,000 Gallons Daily*				Storage Facilities Capacity in 1,000 Gallons				Active Services	
			Number				Number					
Amityville	12	13	3	4	13,109	15,125	2	2	1,045	1,045	9,992	10,619
Babylon	48	54	14	15	58,998	70,808	6	6	5,770	5,770	37,836	38,461
Bay Shore	59	61	15	15	72,246	76,278	8	8	6,370	6,370	43,557	44,366
East Hampton	12	18	9	11	6,630	10,590	2	2	750	750	3,663	4,805
Huntington	27	28	8	8	22,114	24,130	7	7	6,832	6,832	13,007	13,113
Northport	18	18	9	9	28,538	28,538	5	5	3,020	3,020	13,470	13,731
Patchogue	42	44	20	21	62,196	66,228	8	8	7,465	7,465	32,586	35,704
Port Jefferson	46	53	20	24	67,344	81,024	7	7	7,404	7,404	24,185	26,295
Sag Harbor	4	4	2	2	2,178	2,178	1	1	1,500	1,500	922	950
Smithtown	41	42	17	17	64,130	66,146	6	5	5,434	5,100	18,446	19,194
Southampton	5	5	1	1	3,600	3,600	1	1	300	300	2,143	2,166
Westhampton	15	16	5	6	7,006	8,014	2	2	750	750	2,657	2,952
Totals	329	356	123	133	408,089	452,659	55	54	46,640	46,306	202,464	212,356

*Based on 24-hour operation

As of May 31, 1974

As of May 31, 1975

Report of Independent Accountants

To the Members of
Suffolk County Water Authority

In our opinion, the accompanying balance sheets and the related statements of revenues and of changes in financial position present fairly the financial position of Suffolk County Water Authority at May 31, 1975 and 1974, the results of its operations and the changes in financial position for the years then ended, in conformity with generally accepted accounting principles consistently applied. Our examinations of these statements were made in accordance with generally accepted auditing standards and accordingly included such tests of the accounting records and such other auditing procedures as we considered necessary in the circumstances.

PRICE WATERHOUSE & CO.

June 27, 1975
Huntington Station, L.I., N.Y.

Statements of Revenues

Year ended May 31,

	<u>1975</u>	<u>1974</u>
Revenues:		
Operating	\$17,310,000	\$16,250,000
Interest	1,556,000	1,459,000
Total revenues	<u>18,866,000</u>	<u>17,709,000</u>
Operating expenses (Note F):		
Operations	7,416,000	6,200,000
Maintenance	1,984,000	1,333,000
Total operating expenses, except depreciation deducted below	<u>9,400,000</u>	<u>7,533,000</u>
Revenues before interest and depreciation (Note D)	<u>9,466,000</u>	<u>10,176,000</u>
Deduct:		
Interest on bonds	4,508,000	4,147,000
Amortization of debt discount and expense	100,000	104,000
Depreciation (Note A)	2,032,000	1,867,000
	<u>6,640,000</u>	<u>6,118,000</u>
Revenues invested in facilities:		
For the year	2,826,000	4,058,000
At beginning of year	38,642,000	34,584,000
At end of year	<u>\$41,468,000</u>	<u>\$38,642,000</u>

Balance Sheets

May 31,

Assets

	1975	1974
Water Plant, at cost, less accumulated depreciation (Notes A and B)	\$167,024,000	\$153,220,000
Funds held by Fiscal Agent (Note A):		
New construction fund, cash	201,000	1,529,000
Debt Service reserve fund, including certificates of deposit of \$5,500,000 and U.S. Government securities of \$1,110,000 at cost (which approximates market)	6,687,000	6,803,000
Bond proceeds fund, including certificates of deposit of \$2,000,000	2,017,000	5,833,000
	8,905,000	14,165,000
Current assets:		
Cash (Note A)	1,066,000	943,000
Bank certificates of deposit (Note A)	6,400,000	4,950,000
Additional funds held by Fiscal Agent:		
General Fund	100,000	91,000
Debt service fund	3,623,000	3,550,000
Accounts receivable, less estimated doubtful accounts of \$379,000 (\$182,000 in 1974)	1,397,000	1,348,000
Unbilled fire protection revenue	541,000	520,000
Material and supplies, at average cost	1,476,000	1,222,000
Prepayments	152,000	114,000
Total current assets	14,755,000	12,738,000
Deferred charges:		
Unamortized debt discount and expense	1,970,000	2,066,000
Other	241,000	110,000
	2,211,000	2,176,000
	\$192,895,000	\$182,299,000
Liabilities		
Water Works Revenue Bonds (Note C)	\$ 95,803,000	\$ 97,300,000
Bond Anticipation Notes (Note C)	6,000,000	
Current liabilities:		
Current maturities of water works revenue bonds	1,445,000	1,336,000
Accounts payable	1,051,000	1,120,000
Accrued interest on bonds	2,259,000	2,241,000
Other accrued liabilities, principally retirement contributions (Note A)	1,836,000	1,525,000
Customers' deposits	2,680,000	2,506,000
Total current liabilities	9,271,000	8,728,000
Advances for Construction (Note A)	11,692,000	11,910,000
Contributions in Aid of Construction (Note A)	28,661,000	25,719,000
Revenues Invested in Facilities	41,468,000	38,642,000
Commitments (Note E)		
	\$192,895,000	\$182,299,000

Statements of Changes in Financial Position

Year ended May 31,

	1975	1974
Financial resources were provided by:		
Operations:	\$ 2,826,000	\$ 4,058,000
Revenues invested in facilities	2,129,000	1,966,000
Add non-cash charges to revenues—depreciation and amortization	4,955,000	6,024,000
Working capital provided from operations	6,000,000	12,748,000
Net proceeds from sale of water works revenue bonds		
Net proceeds from sale of Series P Bond Anticipation Notes	2,723,000	3,813,000
Advances and contributions for construction, net of refunds of \$417,000 in 1975 and \$448,000 in 1974	\$13,678,000	\$22,585,000
	\$15,836,000	\$14,715,000
Financial resources were used for:		
Additions to water plant, net of retirements	(5,260,000)	6,953,000
Increase (decrease) in funds held by Fiscal Agent for new construction, debt service reserve and bond proceeds	1,497,000	1,386,000
Current maturities and redemptions of water works revenue bonds	131,000	90,000
Other	1,474,000	(559,000)
Increase (Decrease) in working capital	\$13,678,000	\$22,585,000

Notes to Financial Statements

May 31, 1975 and 1974

NOTE A—SUMMARY OF SIGNIFICANT ACCOUNTING POLICIES:

General Accounting Policies

The Authority generally follows the uniform system of accounts as prescribed by the Public Service Commission of the State of New York for Class A and B water companies.

Water Plant

The Authority carries its water plant at cost, including cost of purchased and contributed property. The cost of property replaced, retired or otherwise disposed of is deducted from plant accounts and, generally, together with dismantling costs less any salvage, is charged to accumulated depreciation. The costs of repairs and minor renewals are charged to maintenance expense accounts.

Depreciation

Depreciation of water plant is provided on a straight-line basis using a composite annual rate of 1.4%.

Funds Held by Fiscal Agent

The Authority's resolution authorizing the bond issues requires that all revenue be deposited in the name of the Fiscal Agent and allocated to specific funds.

A substantial portion of cash represents monies received from the New Construction Fund held by the Fiscal Agent and from housing developers to be used solely for new construction. In addition, the Bond Proceeds Fund is similarly restricted.

The Debt Service Reserve and Bond Proceeds funds held by the Fiscal Agent at May 31, 1975, aggregating \$8,704,000 consists principally of certificates of deposit and U.S. Government Securities having interest rates of from 5.25% to 7.75%. The certificates of deposit mature on June 30, 1975 and the U.S. Government Treasury Note matures on August 15, 1977. \$6,400,000 of operating funds held by the Authority were invested in certificates of deposit at May 31, 1975. Interest rates ranged from 5.00% to 6.25% and maturities are at various dates through November 17, 1975. The Authority generally maintains such short term investments to maturity.

Retirement Contributions

The Authority makes annual contributions to the New York State Employee's Retirement System to provide retirement benefits for its employees as determined by New York State. Total provision for pension costs amounted to \$1,314,000 (\$1,048,000 in 1974).

Advances for Construction and Contributions in Aid of Construction

Under standard construction loan contracts with residential real estate developers and others, the developer advances to the Authority the cost of new main installations. The Authority refunds such advances, without interest, based upon the number of new customers obtained or as a percentage of the additional revenue received, in annual installments over a period not exceeding five years. After expiration of the contract, the remaining balance of the advance is transferred to Contributions in Aid of Construction (\$1,509,000—1975; \$1,148,000—1974).

Contributions in Aid of Construction also include the original cost of systems contributed to the Authority by municipalities and others as well as service tapping and other fees.

NOTE B—WATER PLANT:

	May 31,	
	1975	1974
Land and land rights	\$ 4,434,000	\$ 4,353,000
Wells, reservoirs and structures	24,640,000	22,105,000
Pumping and purification equipment	6,210,000	5,127,000
Distribution system	133,404,000	120,316,000
Other	1,824,000	1,740,000
Water plant, in service	170,512,000	153,641,000
Construction in progress	14,112,000	15,219,000
Water plant, at cost	184,624,000	168,860,000
Less—Accumulated depreciation	17,600,000	15,640,000
	<u>\$167,024,000</u>	<u>\$153,220,000</u>

NOTE C—BONDS OUTSTANDING:

The bonds outstanding at May 31, 1975, exclusive of current maturities, bear annual interest rates and mature as follows:

SERIES	INTEREST RATE	PRINCIPAL AMOUNT	FINAL DATE	MATURITY	
				ANNUAL AMOUNTS	
A	2¾%	\$ 1,900,000	1984	\$190,000 to	\$ 235,000
A (Term)	2¾%	1,288,000	1985	107,000 to	263,000
B-D	3½%	1,205,000	1988	75,000 to	115,000
F	4.10-4½%	5,045,000	1998	40,000 to	350,000
G	4-4.10%	4,185,000	2000	35,000 to	500,000
H	3¼-3.40%	5,165,000	2001	35,000 to	1,100,000
I	3¼-3½%	14,240,000	2002	310,000 to	1,000,000
J	0.10-4¼%	12,835,000	2002	295,000 to	910,000
K	4.10-5%	10,730,000	2002	200,000 to	1,000,000
L	5-8%	10,400,000	2003	140,000 to	1,670,000
M	6¼-6½%	6,000,000	2005	2,000,000	
N	5-6½%	9,890,000	2006	40,000 to	1,910,000
O	5½-7%	12,920,000	2007	50,000 to	3,100,000
		<u>\$95,803,000</u>			

The debt consists principally of serial bonds which usually mature in increasing annual installments, except that \$1,288,000 of the Series A bonds are term bonds which mature on June 1, 1985. However, the resolution authorizing this issue provides for the retirement of the term bonds in increasing annual amounts out of the sinking fund accumulated for this purpose. The required sinking fund payments have been treated as maturities for the term bonds. The annual maturities, exclusive of current maturities, shown for serial bonds through Series L and Series N and O represent the amounts maturing in fiscal 1977 and in the last year of their term, respectively. The Series M bonds mature \$2,000,000 annually from 2003 to 2005. After certain dates, the bonds are redeemable in the inverse order of their maturity at varying prices in excess of principal amounts depending upon their redemption date.

On January 27, 1975, the Authority authorized the issuance of \$15,000,000 of Water Works Revenue Bonds, Series P, to be dated June 1, 1975. In anticipation of this bond issue, the Authority also adopted a resolution authorizing the issuance of up to \$15,000,000 in Water Works Revenue Bond Anticipation Notes, Series P. On April 16, 1975 the Authority issued \$6,000,000 of these Bond Anticipation Notes, bearing interest at 6.4% per annum and maturing on October 15, 1975.

The proceeds from the sale of the Series P Bonds are to be used: (1) to pay the outstanding Bond Anticipation Notes and (2) to increase the Debt Service Reserve Fund as required by the resolution. The remaining proceeds shall be used to pay the expenses of the issuance and sale of the Series P Bonds and the cost of extending and improving the water plant.

NOTE D—DEBT SERVICE REQUIREMENTS:

Debt service requirements (interest on bonds and notes, principal of bonds maturing serially and sinking fund requirements) for the year ended May 31, 1975 were \$5,956,000. Revenues before interest and depreciation for the year ended May 31, 1975 equaled 1.59 times debt service requirements (1.84 in 1974).

Debt service requirements of the bonds outstanding at May 31, 1975 approximate \$5,910,000 in each of the next five years.

NOTE E—COMMITMENTS:

The Authority has authorized a capital improvement construction budget for the fiscal year ended May 31, 1976 of approximately \$19,350,000 (\$18,120,000 in 1975). A substantial portion of this amount has been committed at May 31, 1975.

NOTE F—SUPPLEMENTARY INFORMATION ON OPERATIONS:

Revenues before interest and depreciation decreased as a percentage of total operating revenues in 1975 due mainly to significant increases in operating and maintenance costs. Rates for power purchased to pump water rose sharply during fiscal 1975 to 11.3% of operating revenue from 7.9% in 1974. The Authority also incurred substantial additional costs in 1975 in maintaining and repairing its distribution system due in part to the Southwest Sewer Project of Suffolk County. Such costs charged to operations amounted to \$522,000 in 1975 (\$217,000 in 1974).



Communities Served

Babylon District

Amityville
Amity Harbor
Babylon
Copiague
Deer Park
Lindenhurst
North Amityville
North Babylon
North Lindenhurst
Pinelawn
West Babylon
Wyandanch

Bay Shore District

Bay Shore
Brentwood
Brightwaters
Central Islip
East Islip
Edgewood
Great River
Islip
Islip Terrace
North Bay Shore
North Great River
North Islip
Oakdale
West Bay Shore
West Brentwood
West Islip

East Hampton District

Amagansett
East Hampton
Freetown
Montauk

Huntington District

Asharoken
Centerport
Cold Spring Harbor

Commack
Crab Meadow
East Huntington
East Neck
East Northport
Eatons Neck
Fort Salonga
Halesite
Huntington
Huntington Bay
Huntington Station
Lloyd Harbor
Northport

Patchogue District

Bayport
Bellport
Blue Point
Bohemia
Brookhaven
Coram
East Holbrook
East Lake Ronkonkoma
East Patchogue
Farmingville
Holbrook
Holtsville
Lakeland
Lake Ronkonkoma
North Bellport
North Patchogue
Patchogue
Ronkonkoma
Sayville
Selden
South Centereach
South Holbrook
South Medford
South Yaphank
West Bellport
West Ronkonkoma
West Sayville
Yaphank

Port Jefferson District

Belle Terre
Centereach
Coram
East Setauket
Lake Grove
Middle Island
Miller Place
Mount Sinai
North Centereach
North Selden
Poquott
Port Jefferson
Port Jefferson Station
Ridge
Setauket-South Setauket
Sound Beach
South Stony Brook
Stony Brook*
Terryville

Smithtown District

East Commack
Flowerfield*
Hauppauge
Kings Park
Nesconset
Saint James*
San Remo*
Smithtown
South Hauppauge
West St. James
West Smithtown*
Village of The Branch

Sag Harbor District

Sag Harbor

Southampton District

Southampton

Westhampton District

East Quogue
Quogue
Quogue
Westhampton
Westhampton Beach

* Included in Wholesale
Water Districts

