

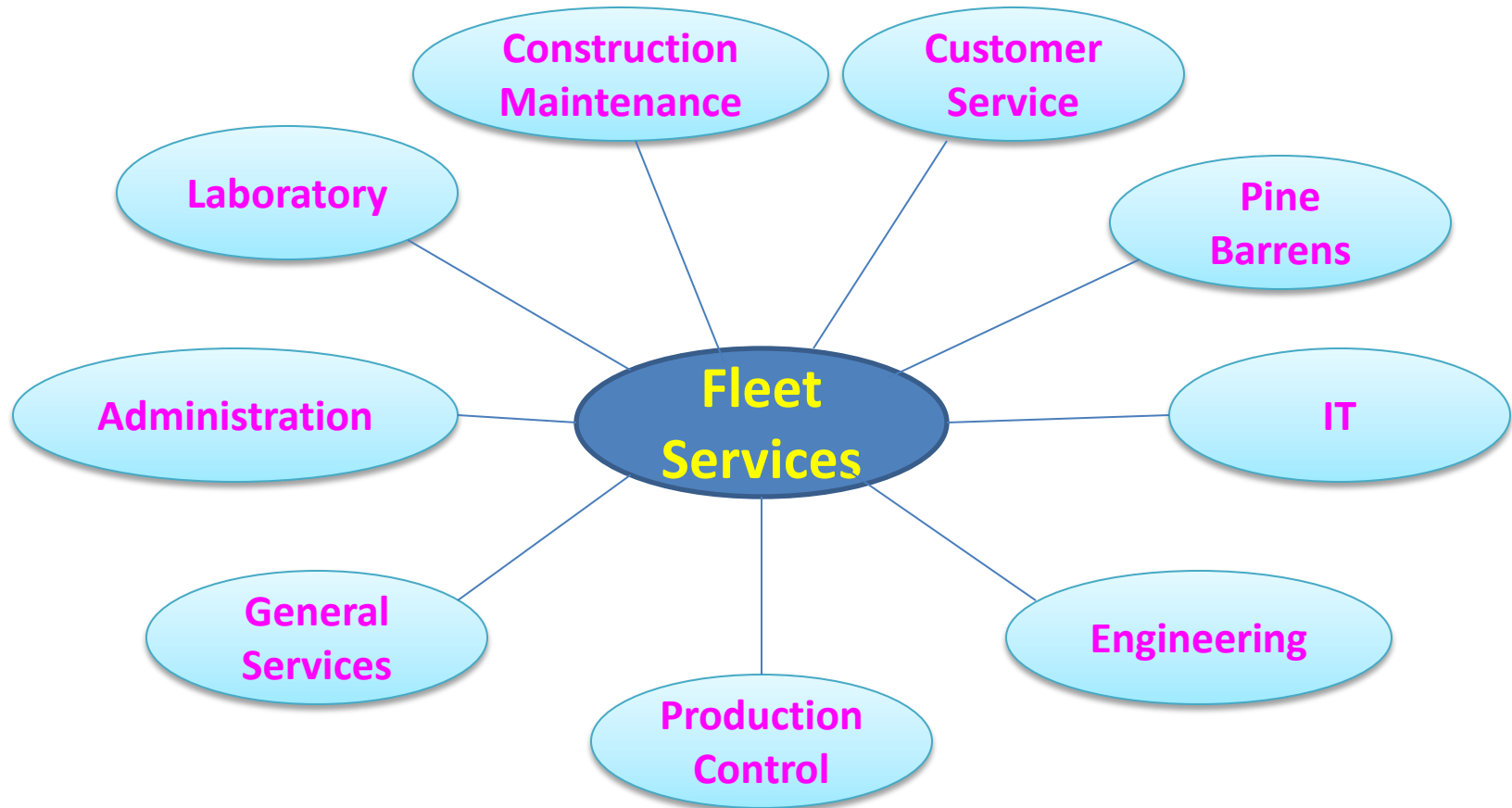
SCWA Fleet Services



What is Fleet Services?



SCWA Fleet Services



Fleet Services provides and maintains vehicles & equipment for its internal customers within the various departments throughout The Authority.

SCWA Fleet Services

Fleet Facts

➤ Number of Vehicles & Equipment in the Fleet:

- Construction & Maintenance - 224
- Production Control - 97
- Customer Service - 74
- Admin, Gen Svc, Lab, Store, Fleet, Eng, IT - 71

Fleet Total: 466



SCWA Fleet Services

Fleet Facts

- **How many miles does the SCWA fleet travel in an average year:**



SCWA Fleet Services

Fleet Facts

- How many miles does the SCWA fleet travel in an average year:

2,821,000 mi.



SCWA Fleet Services

Fleet Facts

➤ Gallons of fuel consumed by SCWA vehicles in an average year:

• Gasoline -	126,190
• Diesel Fuel -	173,647
• CNG – (Diesel Gallon Equivalent)	21,565
Total:	321,402



SCWA Fleet Services

Vehicle Acquisition and Disposal



➤ Acquisition:

- SAP report of vehicles & equipment due for replacement.
- Evaluate vehicles to be replaced.
- Meet with Department heads to discuss needs.
- Proposed budget submitted.
- Budget approval, Expenditure authorization.



SCWA Fleet Services

Vehicle Acquisition and Disposal

➤ Acquisition:

- Vehicle & equipment specification.
- Appropriate State & County contract utilization.
- Vehicle created in SAP.
- Vehicle maintenance plans created in SAP.



SCWA Fleet Services

Vehicle Acquisition and Disposal

➤ Acquisition:

- License plates & registration.
- Coordinate two-way radio installation.
- New vehicle & equipment in-house prep.
- GPS installation.
- In-house customizing and modifications.



SCWA Fleet Services

Vehicle Acquisition and Disposal

➤ Disposal:

- Vehicle prepped for auction.
- Auction process.
- Auction proceeds.
- Removal from property records.
- Reassignment of retained vehicles.



SCWA Fleet Services

Maintenance

➤ Scheduled & Demand Maintenance:

- **In-house vs Outsourcing -**
 - Light vs heavy duty.
 - Labor rates.
 - Pros & cons.
 - Accident repairs, transmission
- **Scheduled Maintenance –**
 - SAP maintenance plans.
 - A, B & C PM philosophy.
 - Frequency.
 - NY State Inspection.
- **Demand Maintenance -**
 - Driver's Inspection Report.
 - Vehicle breakdown.
 - Remote site repairs.



SCWA Fleet Services

Maintenance

➤ Westhampton Shop Area:

- Dedicated area within the building.
- Shop equipment – lift, compressor, welder, fluid dispensing equipment.
- Electrical upgrade.
- Increased operational efficiencies.
- Improved vehicle repair turnaround times.
- Decreased vehicle out-of-service rates.



SCWA Fleet Services

Alternative Fuels

➤ CNG Conversions:

- Greater LI Clean Cities Coalition (GLICCC) – \$650K Grant .
- Cost of conversion, \$50K in 2012 vs \$20K in 2015.
- Pay-back period, 12 years.
- International Harvester, Emissions Solutions Inc. (ESI) technology.
- Current technology – Ford V12, Cummins.



SCWA Fleet Services

Alternative Fuels

➤ Oakdale CNG Refueling Facility:

- Currently under construction.
- Timed refueling – Overnight.
- Fast fill capability.
- Truck shelter, 26 refueling points.
- CNG vehicle reassignment to Oakdale.
- Eliminate reliance on limited number of outside fueling facilities.



➤ Hybrid Vehicles:

- Currently 16 units in the fleet.

SCWA Fleet Services

New Fleet Services Maintenance Facility

➤ Existing Shop:

- Depth of current bays is inadequate.
- Several trucks in the current fleet do not fit in the bays with the door closed.
- Two of the five current bays are too narrow to accommodate the safe and efficient repair of medium and heavy duty trucks.



SCWA Fleet Services

New Fleet Services Maintenance Facility

➤ Existing Shop:

- The storage of materials and equipment required to support the daily operation exacerbates this condition.

These include:

Parts ordered for specific vehicles

Active product drums

Bulk metal stock

Shop tools & equipment

Shop supplies

Mechanic's tool boxes and work benches

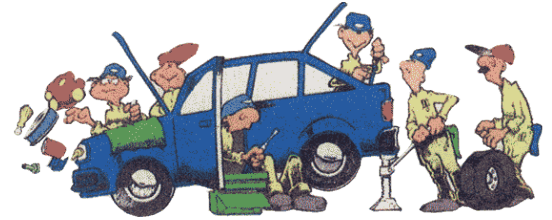


SCWA Fleet Services

New Fleet Services Maintenance Facility

➤ Existing Shop:

- Nightshift complement increased from three to four.
- Currently only three trucks are able to be worked on inside the shop at a given time.
- Current shop floods during prolonged heavy rain due to low elevation and close proximity to neighboring wetlands.



SCWA Fleet Services

New Fleet Services Maintenance Facility

➤ Existing Shop:

- Numerous complaints from CM operations office staff regarding intrusion of fumes into adjoining office space from vehicle activity in and around current shop.



- Attempts to seal building between shop and office space have proven inadequate.

SCWA Fleet Services

New Fleet Services Maintenance Facility

➤ Benefits of The New Larger Shop Include:

- Segregate vehicle repair operations from CM office area.
- Decrease congestion around CM Operations building.
- Frees up existing space for possible office expansion.
- Increased work space promotes safe and efficient job performance.
- Larger facility allows for more efficient and orderly storage of parts, materials and shop tools & equipment.
- Increased work space augments shop production by allowing greater flexibility while better accommodating the increased manpower.
- Increased workforce morale.
- CNG compliant.

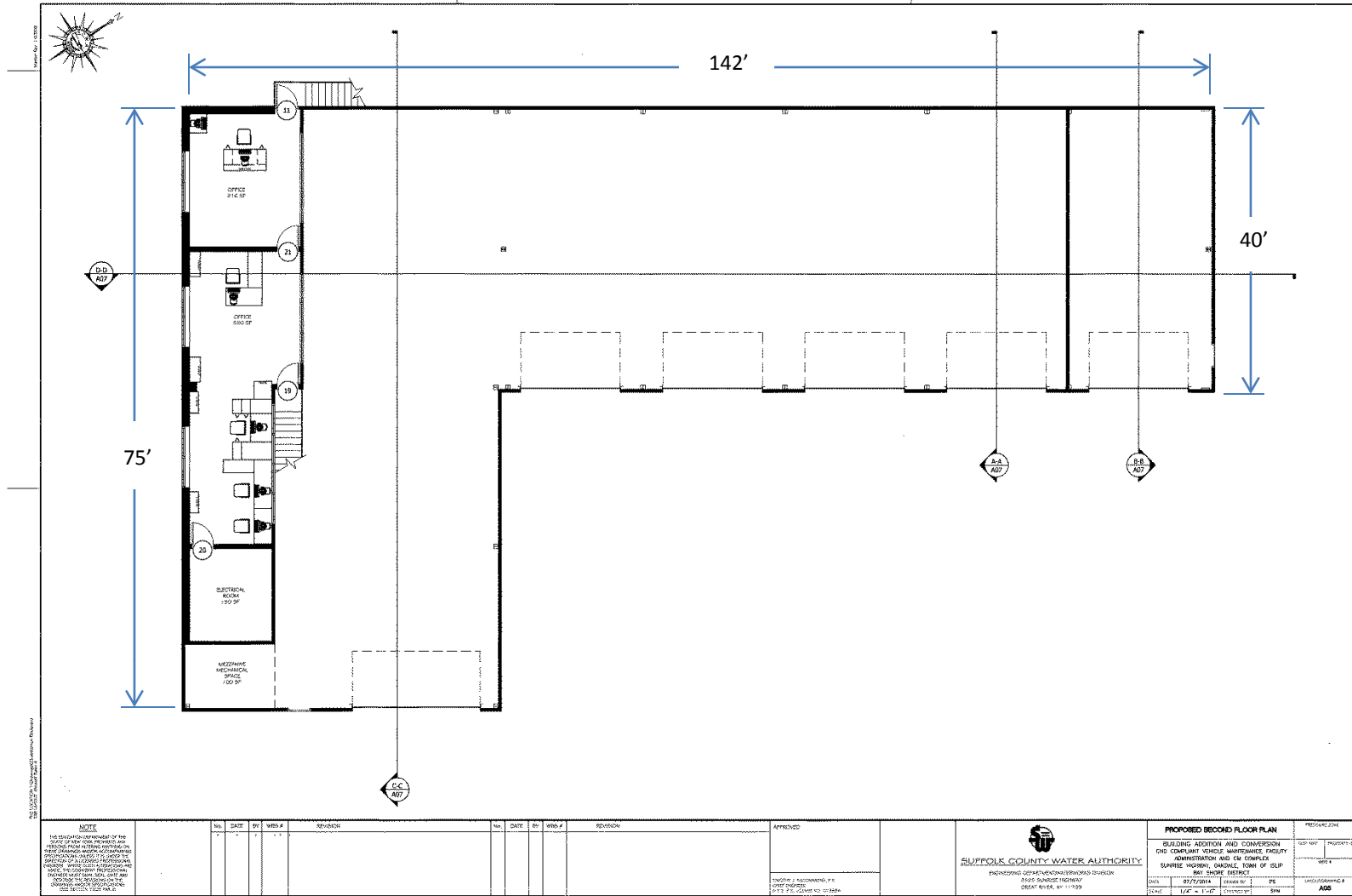


SCWA Fleet Services

Existing Butler Building



SCWA Fleet Services



New Shop – Floor Plan



SCWA Fleet Services

We're Not Just Vehicle & Equip. Maintenance

➤ Assistance to other departments :

- Provide training to equipment operators.
- Assisted Engineering in relocating the antique pump from Great River to Hauppauge and in placing multiple generators around the Oakdale facility.
- Provide assistance to Facilities Management with snow removal.



SCWA Fleet Services



SCWA Fleet Services

Thank You



Drive Safely