



# WaterTalk

Your Questions,  
Our Answers About Vital  
Drinking Water Topics





# WaterTalk

**Seth Wallach**

*-Community Outreach  
Coordinator*



# Why WaterTalk?

- There's a lot of information out there about drinking water quality. It can be confusing, so we want to make sure you're getting accurate information.
- So a few years ago we created this forum which we hold in communities all throughout our service territory, from Melville to Montauk.
- Today, you'll hear from on-staff experts about topics vital to the protection and preservation of our drinking water supply.
- For instance, you'll hear about the steps our laboratory takes to make sure your drinking water is always safe.



# Why WaterTalk?

- We'll talk about the local infrastructure that provides your water.
- We'll talk about a program we developed called WaterTraq that lets you monitor water quality from home.
- And we'll talk about what we're doing to encourage the judicious use of our water resources.
- Most importantly, we're here to take your questions.





# WaterTalk

**Jonathan Kornreich**

*-Brookhaven Town Councilman*



# What SCWA is...

- The Suffolk County Water Authority is an **independent public-benefit corporation** operating under the Public Authorities Law of the State of New York.
- SCWA serves approximately **1.2 million** Suffolk County residents.
- Beginning operations in 1951, SCWA operates without taxing power on a **not-for-profit** basis.
- SCWA is one of the largest **groundwater suppliers** in the country.



# What SCWA is...

- SCWA has some of the **lowest water rates** in the country among large water suppliers (*Goldman Sachs, 2018*).
- SCWA's **two AAA Bond Ratings** (*Fitch and S&P*) put us in the top 1 percentile of the nation's 20,000 water suppliers for fiscal responsibility.



# What SCWA is not...

- SCWA is not a branch of Suffolk County Government.
- SCWA does not create or enforce drinking water standards. This is the responsibility of the U.S. Environmental Protection Agency (EPA) and New York State Department of Health (DOH).







# WaterTalk

**Water Infrastructure**

**Paul Kuzman**

*-Director of Construction/  
Maintenance*

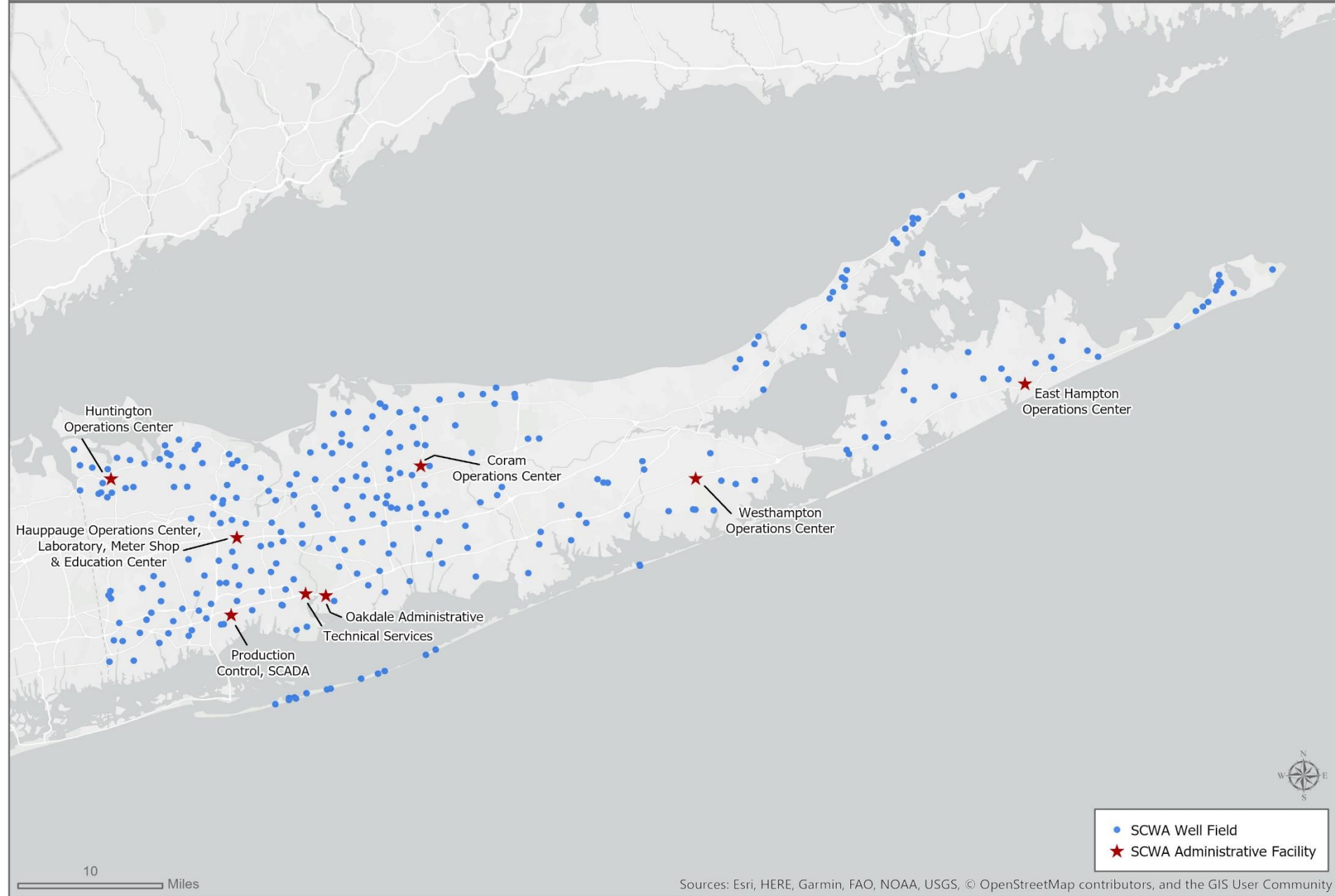


# SCWA Statistics

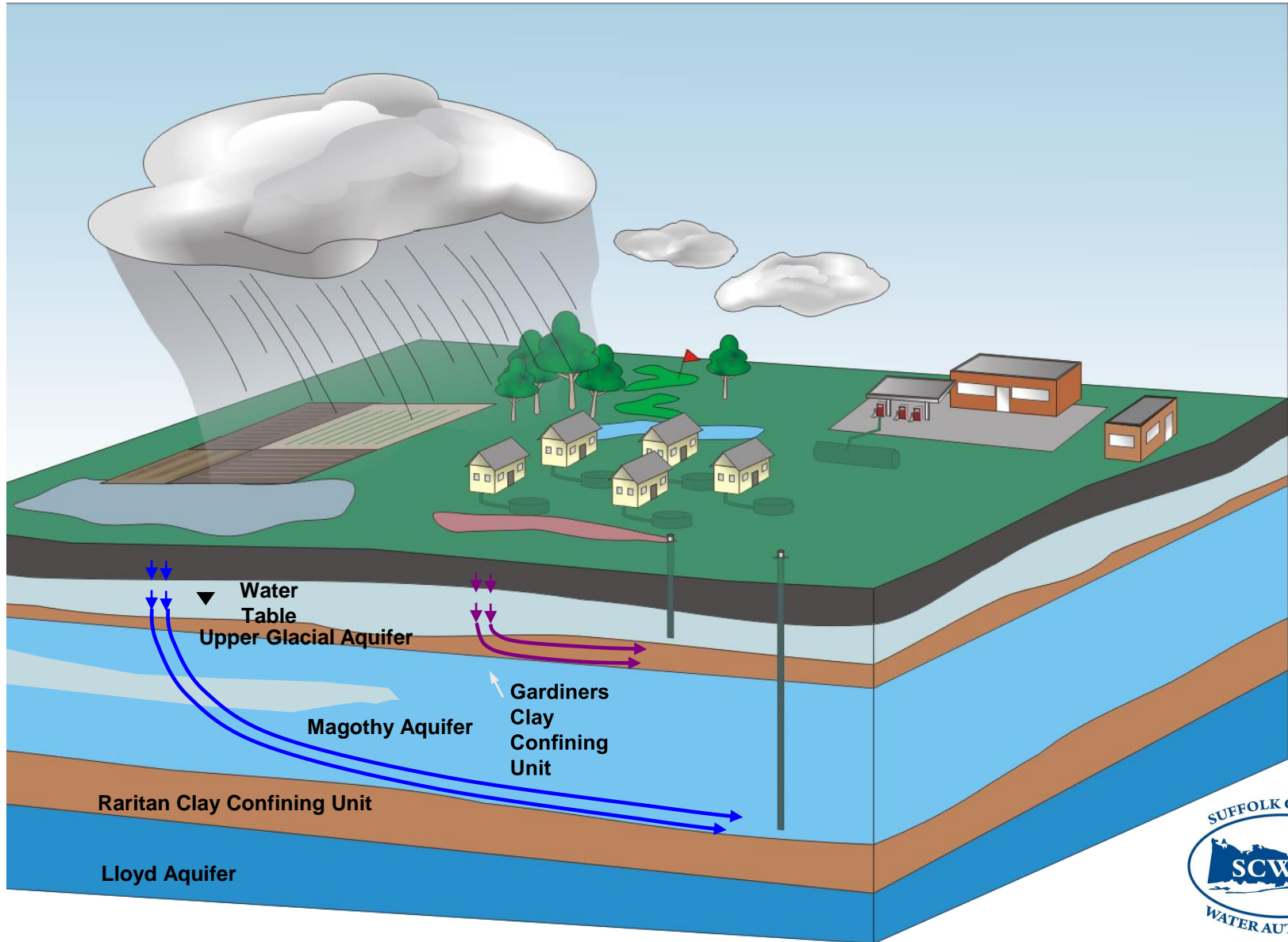
- 633 total wells (587 active) at 240 pump stations.
- 68 Storage Tanks with 71.6 Million Gallons (MG) of storage.
- Avg Daily Pumpage: 210 MG.
- Avg Peak Pumpage: 470 MG.



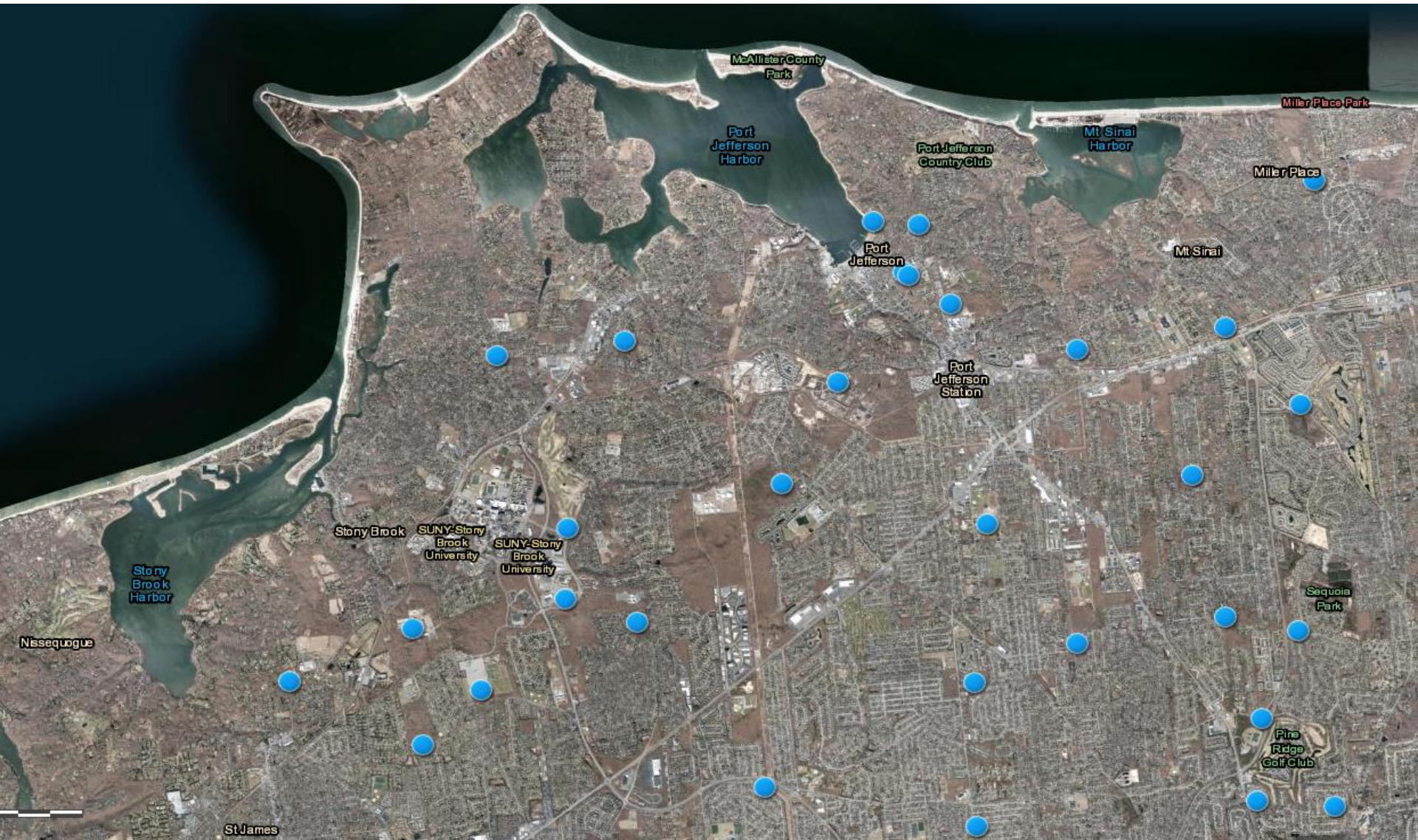
# Suffolk County Water Authority Well Fields & Administrative Facilities



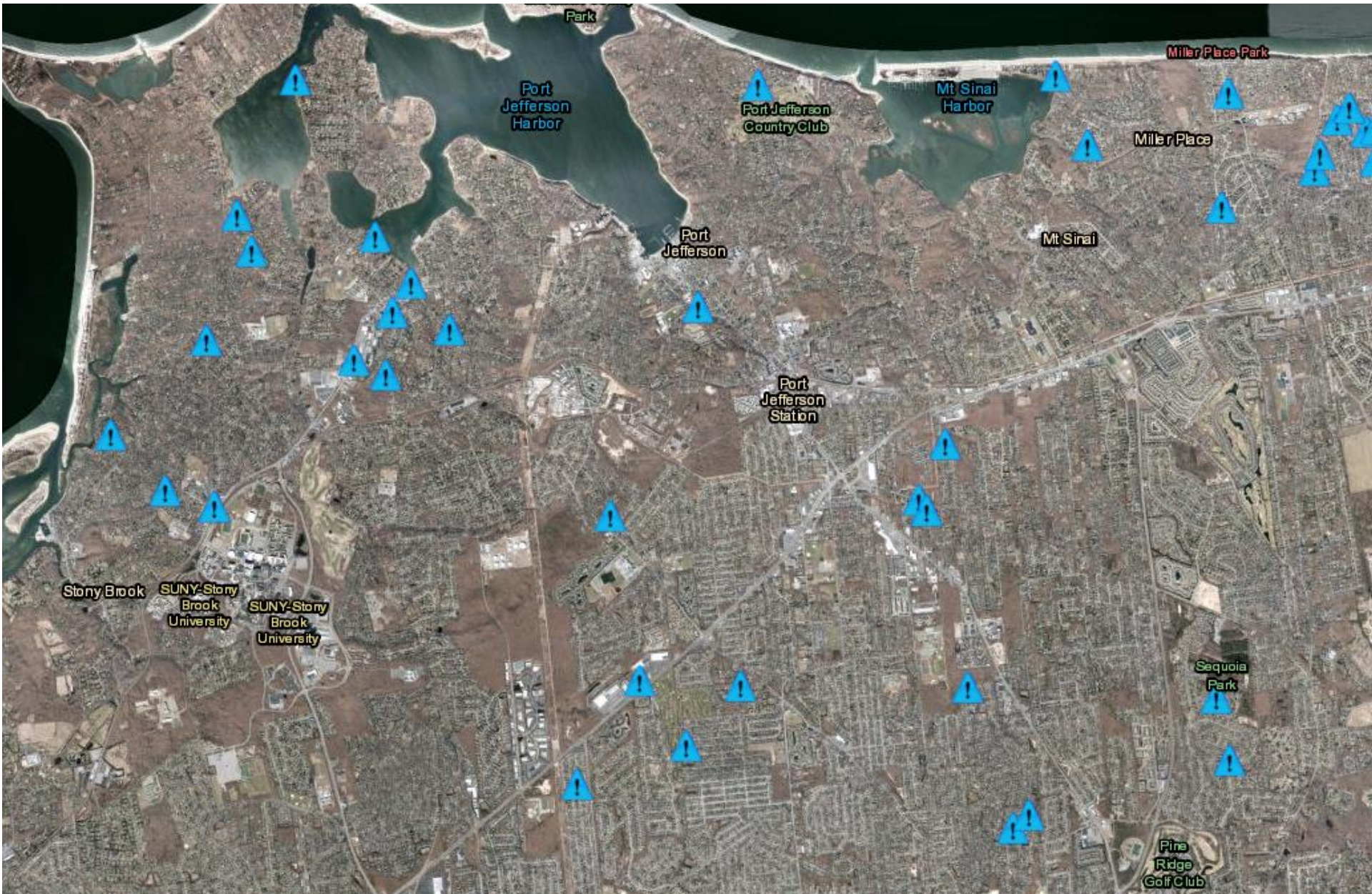
# Source Water – Where Does Our Water Come From?



# Port Jefferson Area Wells



# Main Breaks 12/1/2020 – Present



# Water Main Break Excavation

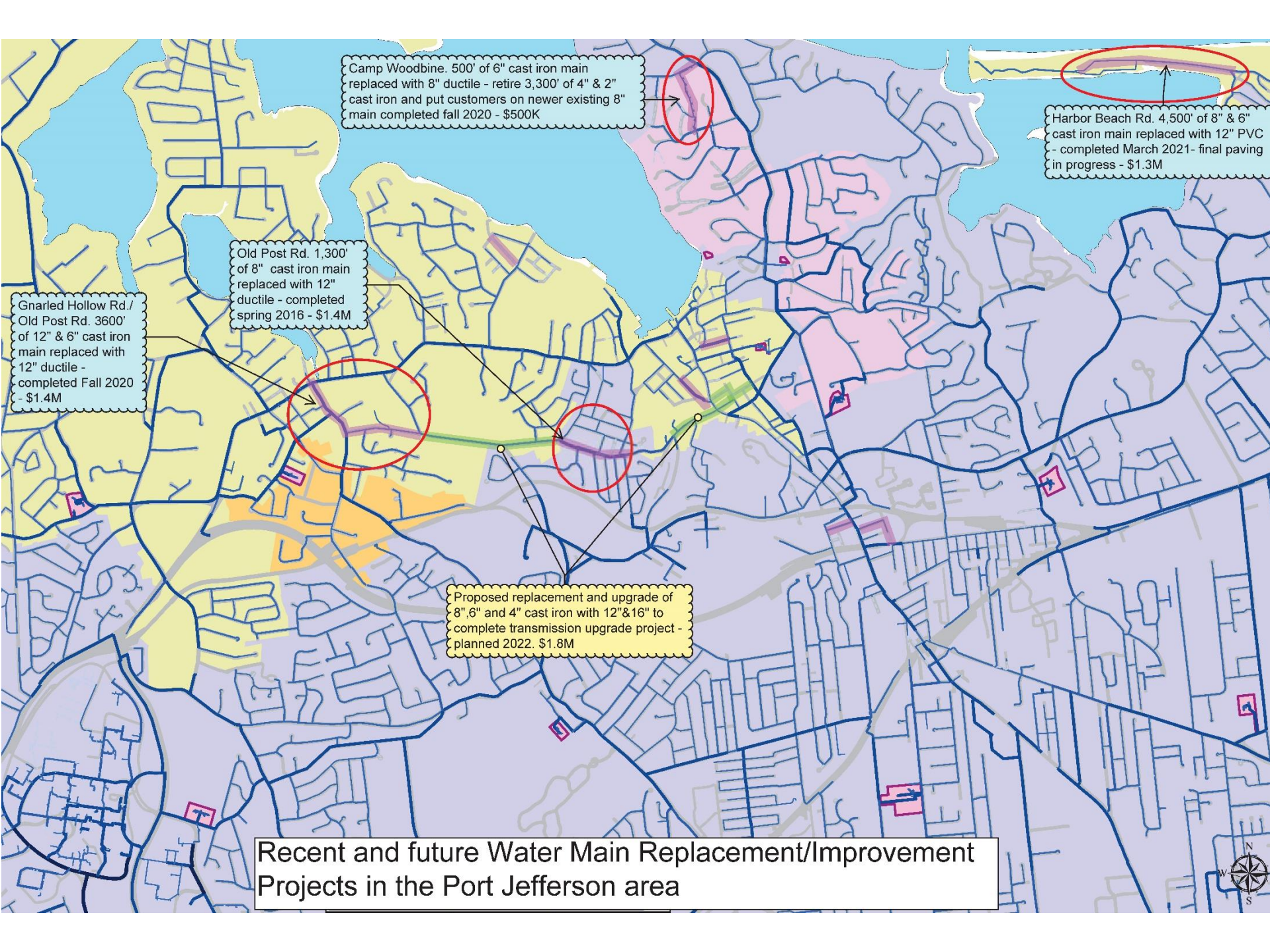


# Infrastructure Improvement Projects

- Replacement well at Sherry Dr (Setauket).
- Replacement well at Jayne Blvd (Terryville).
- Granular Activated Carbon (GAC) treatment system installed at Jayne Blvd (Terryville).
- Two GAC installed at Chestnut Street (Port Jefferson). All three GAC systems were installed to treat volatile organic chemicals.







Camp Woodbine. 500' of 6" cast iron main replaced with 8" ductile - retire 3,300' of 4" & 2" cast iron and put customers on newer existing 8" main completed fall 2020 - \$500K

Harbor Beach Rd. 4,500' of 8" & 6" cast iron main replaced with 12" PVC - completed March 2021- final paving in progress - \$1.3M

Old Post Rd. 1,300' of 8" cast iron main replaced with 12" ductile - completed spring 2016 - \$1.4M

Gnarled Hollow Rd./ Old Post Rd. 3600' of 12" & 6" cast iron main replaced with 12" ductile - completed Fall 2020 - \$1.4M

Proposed replacement and upgrade of 8", 6" and 4" cast iron with 12" & 16" to complete transmission upgrade project - planned 2022. \$1.8M

Recent and future Water Main Replacement/Improvement Projects in the Port Jefferson area





# WaterTalk

Water Quality

Valerie Kamm

*-Assistant Supervising Chemist*



# SCWA Laboratory

- SCWA's state-of-the-art laboratory is the **largest groundwater laboratory in the country**.
- Test samples are taken at the wellhead, at various stages of treatment and within the distribution system for bacteria and a wide range of inorganic and organic chemicals.
- SCWA's in-house standards for water quality are often **tougher than** state or federal regulations.
- Tested for **400** compounds (**251 more than** required by regulators)
- Testing at a **higher frequency** than required by SCDHS.
- Analyzed **75,000** samples last year for 181,000 tests.

# Levels of Detection


- SCWA's state-of-the-art laboratory instruments can detect compounds in the water down to parts-per-**million**, parts-per-**billion**, or in some cases even parts-per-**trillion**.
- For reference:
  - 1 Part-per-million = 1 second in 12 days
  - 1 Part-per-billion = 1 second in 32 years
  - 1 Part-per-trillion = 1 second in 32,000 years



# Distribution Sample Station



# Consumer Confidence Report



**SUFFOLK COUNTY WATER AUTHORITY**  
www.scwa.com

## 2020 DRINKING WATER QUALITY REPORT

For the period January 1, 2019 to December 31, 2019  
(Including data for Fair Harbor, Riverside, Brentwood, Stony Brook, Dering Harbor and East Farmingdale Water Districts)

Dear Suffolk County Water Authority Customer:

We're pleased to present you with the Suffolk County Water Authority's 2020 Drinking Water Quality Report. This report contains comprehensive, detailed information about the water quality in wells that serve your home or business.

SCWA provides drinking water that meets or surpasses rigorous state and federal regulations - we hold ourselves to a much higher standard than regulators require. This is true even during the COVID-19 pandemic. Health experts have made it clear that the airborne virus has no impact on drinking water.

SCWA's laboratory, one of the most sophisticated in the United States, tested for 400 chemicals in 2019 - 251 more than required by regulators - and analyzed approximately 75,000 samples that produced roughly 181,000 test results to make sure your drinking water is safe. No one tests more than SCWA.

Our commitment to you is to provide the highest quality drinking water that is tested around the clock.

We're also extremely proud of the proactive measures we've taken to protect your drinking water from emerging contaminants such as the perfluorinated compounds PFOS and PFOA and the synthetic compound 1,4-dioxane. Imminently, New York State will be approving the toughest regulations for these chemicals in the country. And for all three, SCWA has for years been testing, developing and installing innovative treatment technology to remove these chemicals from groundwater.

This report is available online in an interactive design that allows you to find water quality information quickly and easily. If you have any questions about this report, please call us at 631-698-9500 and our customer service professionals will assist you.

Patrick G. Halpin, Chairman,  
Suffolk County Water Authority

Este informe contiene información muy importante sobre su agua de beber. Tradúzcalo o hable con alguien que lo entienda bien.

### Here's What's Inside:

- Pages 2-3: how our water cycle works and information on the Suffolk County Source Water Assessment Program
- Pages 4-5: information on protecting our groundwater and the value of water and conservation
- Pages 6-7: a message from our Laboratory Director and a list of compounds not detected in our drinking water
- Pages 8-9: lists of SCWA wells placed in service and taken out of service and water treatment information
- Pages 10-27: educational information about the different constituents in drinking water, including various tables with our test results for UCMR4, NYS Drinking Water Council recommends MCLs for emerging contaminants, PFAS Monitoring, pharmaceuticals, bacteria, disinfection byproducts, lead, copper, and radionuclides as well as important information for immuno-compromised individuals and SCWA e-billing information
- Page 28: SCWA receives approval for PFOA/PFOS test that is faster and detects to a lower level
- Page 29: SCWA wins national award for sustainability
- Page 30: water main project to provide major supply boost to Westhampton Area
- Pages 31-32: how to review the water quality data for your area
- Pages 33-40: a water distribution area index to find the water quality results for your home or business
- Pages 41: notices for water districts the SCWA operates
- Page 42 and 43: a comprehensive map of our water distribution areas
- Pages 44-53: water quality data for all distribution areas
- Page 54: SCWA contact information

Go to:  
**SCWA.com**  
To read the full  
Drinking Water  
Quality Report





# WaterTalk

WaterTraq

**Rich Bova**

*-Geologist*

*-Deputy Director of Strategic Initiatives*

*-Emergency Manager*



# WaterTraq

- WaterTraq is an online GIS-based water quality database from the Long Island Commission for Aquifer Protection (LICAP).
- Users can search by address, or by contaminant at: [LICAPonline.com](http://LICAPonline.com)
- Water quality data is pulled from:
  - Wells
  - Laboratory
  - SCWA, all other Long Island suppliers.





# Searching with WaterTraq

The screenshot displays the WaterTraq web application interface. At the top, the browser address bar shows the URL: [scwany.maps.arcgis.com/apps/webappviewer/index.html?id=f133851c4347418ba9961ea2d7ada741](https://scwany.maps.arcgis.com/apps/webappviewer/index.html?id=f133851c4347418ba9961ea2d7ada741). The application header includes the 'WaterTraq' logo and the text 'Long Island Water Quality Viewer'. A search bar on the left contains the text '121 W Broadway, Port Jeffe' and a search icon. Below the search bar, a dropdown menu shows 'Long Island Aquifer Sample Point BY COMPOUND (N...'. A results table is displayed, showing data for '2017 SCWA Untreated Water Samples: Chloride'. The table has columns for 'Tasks' and 'Results'. The 'Results' column contains the following data:

Tasks	Results
SUPPLIER	SCWA
WELL ID	S-121-100
COMPOUND	Chloride
RESULTS	318.63
UNITS	mg/l
MCL	250.00
EXCEED MCL	YES
AQUIFER	MAGOTHY
WELL DEPTH	313.00

The map in the background shows the Long Island Sound and surrounding areas, including Port Jefferson Harbor and various parks and towns. A red circle highlights a specific location on the map, corresponding to the search results.

[www.LICAPonline.com](http://www.LICAPonline.com)



# WaterTalk

**Water Conservation**

**Seth Wallach**

*- Community Outreach Coordinator*



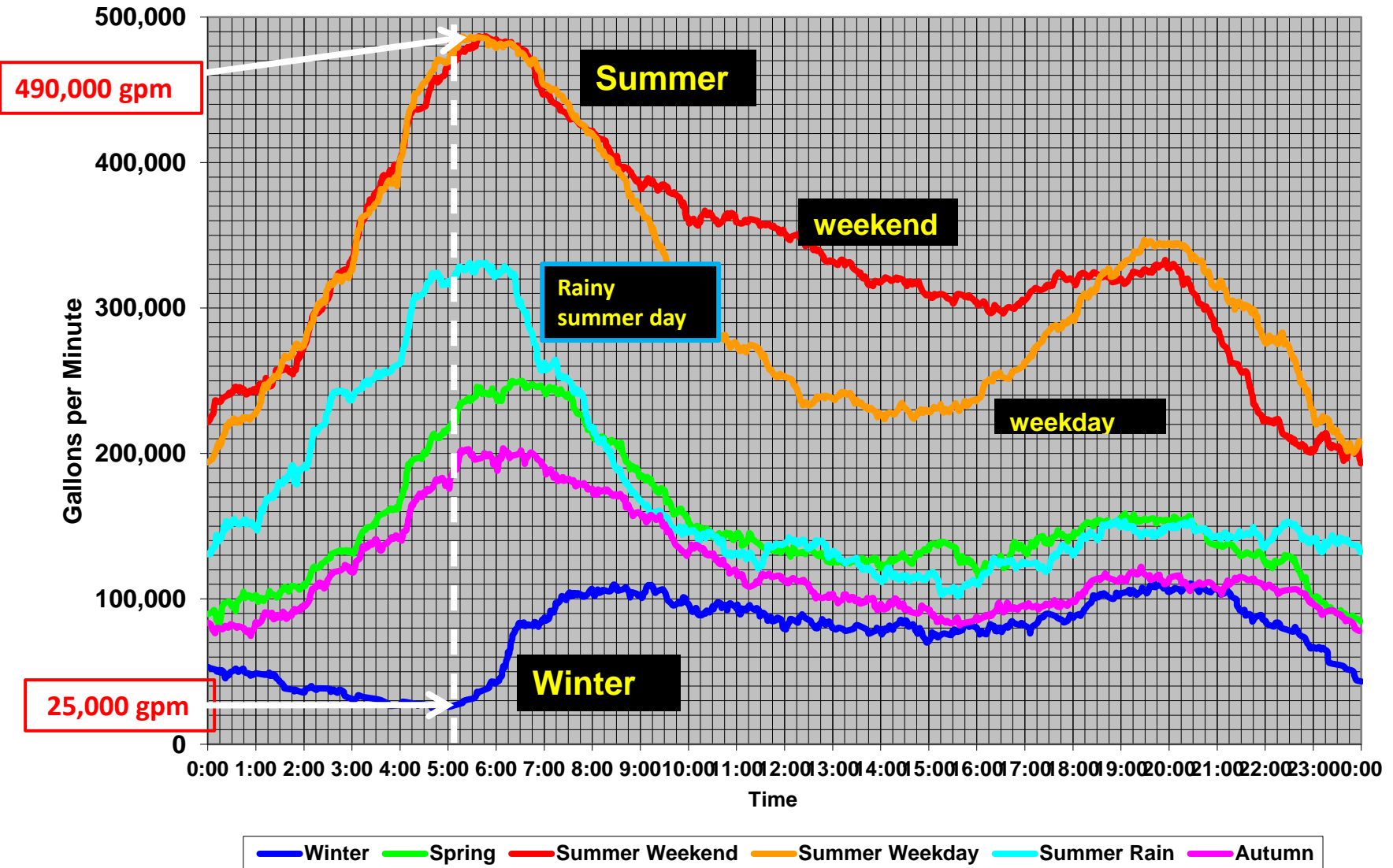
# Why Should I Conserve Water?

- Long Island has a sufficient, but not limitless supply of groundwater.
- Higher water usage means more SCWA infrastructure, which means more costs that are passed along to customers.
- Higher peak water usage (3:00 – 7:00 AM) impacts pressure and fire protection.
- Over-pumping can have negative water quality impacts.



# Seasonal Water Use - SCWA

## The Irrigation Situation



# Changing Irrigation Habits

- If you have an irrigation timer, please make sure it is **not** set to operate between 3:00 – 7:00 A.M.
- Use an odd/even watering schedule.
- Consider a smart irrigation timer that uses water more efficiently (and get \$50 off your next SCWA bill just for purchasing a smart controller).



# Average User vs. Water Waster

- Average residential customer uses just under 130,000 gallons annually.
- Largest residential user consumed approximately 22 million gallons over a recent year. (*Primarily Irrigation and Geothermal HVAC system*)
- A hospital in the same community used approximately 14.5 million gallons in 2018.



# Water Conservation Tips

- 1) Be smart about watering your lawn with smart irrigation controllers and rain sensors.
- 2) Water less often.
- 3) Use EPA WaterSense products.
- 4) Shorten your showers.
- 5) Detect & fix leaks.



# Water Conservation Tips

6) Shut off the tap when brushing teeth.

7) Fully load washing machines & dishwashers before running.

8) Keep you plants moist with mulch.

9) Don't hose it off if another tool will work.

10) Go to the car wash instead of using the hose.





# Water Wise Programs

- **SCWA water wise account credits-** up to \$50 for the purchase of water-saving devices. Apply today at [SCWA.com/WaterWise](http://SCWA.com/WaterWise)
- The **Water Wise Checkup program** is a free service. One of our water experts will come to your home for a one-on-one consultation and develop a personalized plan to help you save water.

**Sign up or learn more at [SCWA.com/WaterWise](http://SCWA.com/WaterWise)**

*Call: (631) 292-6101*

*Email: [WaterWiseCheckup@SCWA.com](mailto:WaterWiseCheckup@SCWA.com)*

*Direct Message us on:*

*Facebook @SCWAwater*

*Twitter @SuffolkWater*



# Our Water Our Lives Campaign




**DID YOU KNOW?**

Saving water is easy. In fact, there are a number of small steps you can take to make a HUGE IMPACT. Follow the 10 steps below to lower your water bill and help save Long Island's ONLY drinking water supply.

**THE STEPS TO SAVING WATER**

**1** **BE SMART ABOUT WATERING YOUR LAWN WITH SMART IRRIGATION CONTROLLERS AND RAIN SENSORS.**

It's never been easier to have technology help you determine when your lawn needs to be watered. Rain sensors and smart irrigation controllers make sure lawns only get watered when they actually need it, eliminating wasteful overwatering and saving you money.

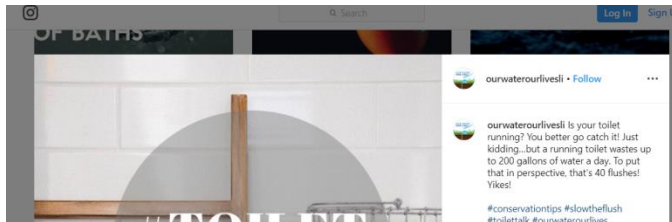


Select Language

**OUR WATER OUR LIVES**

HOW TO HELP OUR AQUIFER PLEDGE SHARE IDEAS CONTACT

PLEDGES SO FAR



**HELP SAVE LONG ISLAND'S ONLY DRINKING WATER SOURCE!**



Take the pledge or share ideas at:  
**WWW.OurWaterOurLives.com**



# WaterTalk

Questions?

