

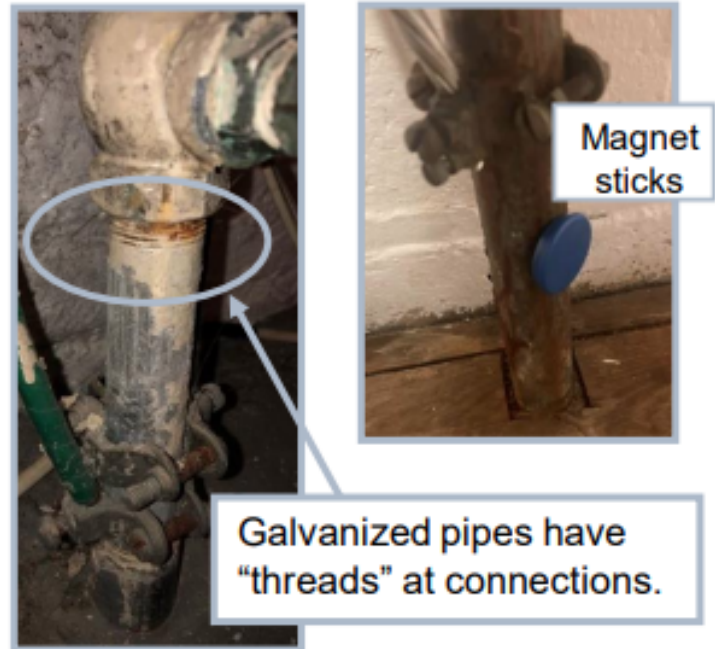
	Lead	Galvanized Iron	Copper	Brass
Outer Appearance	Dull gray, bendable; Often curves between wall/floor and valve	Dark gray or black; Straight rigid pipe	Brown; Can have green corrosion spots	Brown; Can have green corrosion spots
Threads at connections	None	Yes	None	Yes
Scratch Test (coin or key)	Shiny silver	Hard to scratch, remains gray	Copper, like a penny	Gold color
Magnet Test	Does not stick	Magnet WILL stick	Does not stick	Does not stick

Lead



Lead pipes **widen** at base and often form a **"bulb."**

Galvanized Iron



Galvanized pipes have "threads" at connections.

Copper



Brass



Brass has "threads".