



SUFFOLK COUNTY WATER AUTHORITY  
PAYROLL REPORTS  
FOR THE THREE MONTHS ENDING AUGUST 31, 2020

## Table of Contents

### Section I – Summary

Pages 1 - 2	Base/Overtime/Total vs. Budget – By Division
Page 3	Total Payroll by Division – Graph
Page 4	Overtime by Division – Graph

### Section II – Administrative Division

Page 5	Total Payroll by Department – Graph
Page 6	Overtime by Department - Graph

### Section III – Customer Service Division

Page 7	Total Payroll by Department – Graph
Page 8	Overtime by Department – Graph

#### Section IV – Executive Division

Page 9	Total Payroll by Department – Graph
Page 10	Overtime by Department - Graph

#### Section V – Finance Division

Page 11	Total Payroll by Department – Graph
Page 12	Overtime by Department - Graph

#### Section VI – Operations Division

Page 13	Total Payroll by Department – Graph
Page 14	Overtime by Department – Graph

#### Section VII – Overtime Analysis by Categories

Pages 15 - 17	Total Overtime Hours by Category
---------------	----------------------------------

#### Section VIII – Overtime Analysis by Categories

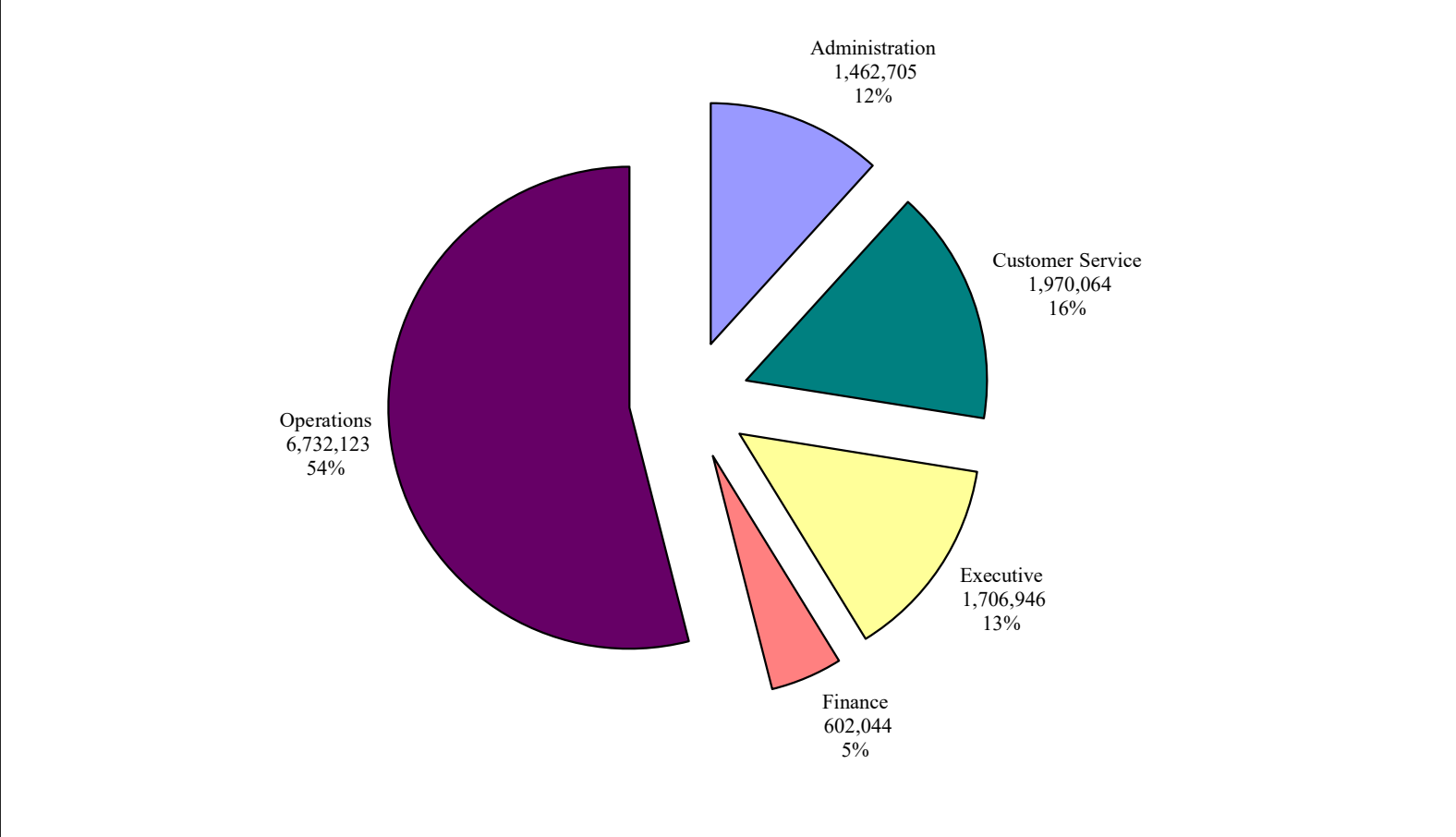
Pages 18 - 19	Overtime Comparative
---------------	----------------------

**Suffolk County Water Authority**  
**Summary of Payroll Activity through August 24, 2020**

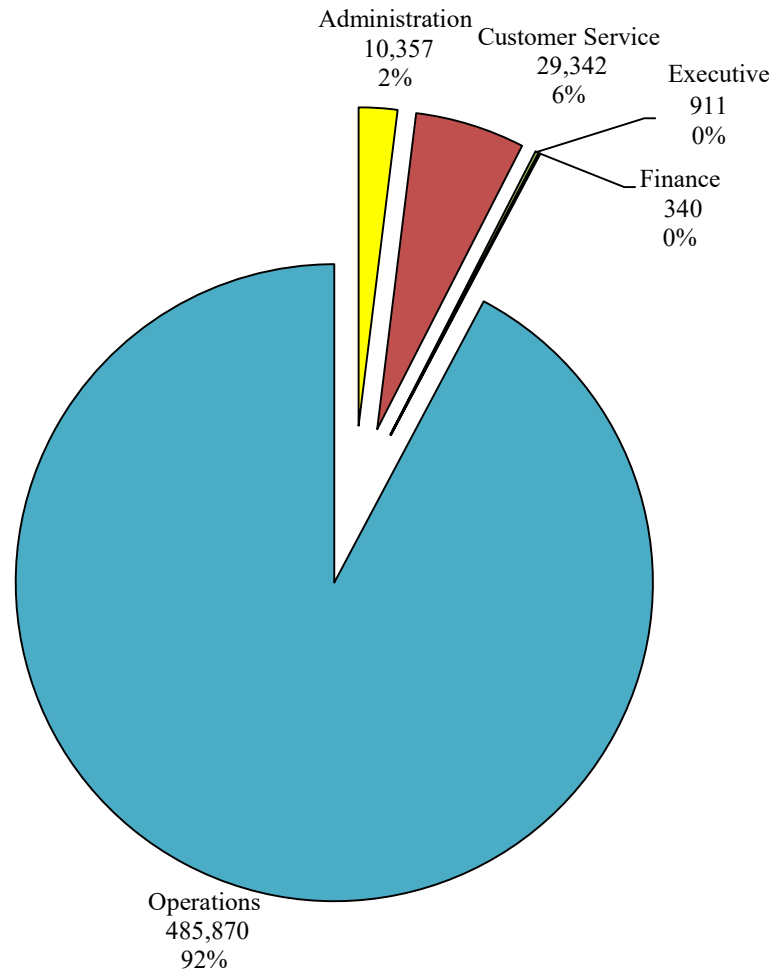
	<u>Actual Month Ending 8/31/2020</u>			<u>Year to Date</u>						
	Base Amount	Overtime	Total	Base Amount	Overtime	Total	Projected 2021 Total Payroll	% Expended	Projected 2021 Overtime Payroll	% Expended
<b><u>Administrative Division</u></b>										
Information Technology -31002	140,134.05	684.00	140,818.05	452,802.44	953.94	453,756.38	2,127,000	21.33%	-	#DIV/0!
Human Resources - 31003	31,484.25	46.15	31,530.40	108,183.40	46.15	108,229.55	471,000	22.98%	1,000	4.62%
Administration-31005	12,840.35		12,840.35	40,747.03	-	40,747.03	233,000	17.49%	-	0.00%
Facilities Management - 32001	74,835.96	1,048.49	75,884.45	223,439.42	3,086.21	226,525.63	916,000	24.73%	10,000	30.86%
Transportation - 32002	74,974.34	2,444.86	77,419.20	313,601.49	6,171.66	319,773.15	1,037,000	30.84%	35,000	17.63%
Stores - 32003	73,724.51		73,724.51	282,846.66	-	282,846.66	1,019,000	27.76%	3,000	0.00%
Safety & Environmental Services - 32005	10,272.84		10,272.84	30,727.13	99.07	30,826.20	139,000	22.18%	-	#DIV/0!
<b>Administrative Division Total</b>	<b>418,266.30</b>	<b>4,223.50</b>	<b>422,489.80</b>	<b>1,452,347.57</b>	<b>10,357.03</b>	<b>1,462,704.60</b>	<b>5,942,000</b>	<b>24.62%</b>	<b>49,000</b>	<b>21.14%</b>
<b><u>Customer Service Division</u></b>										
Customer Service Coram - 10002	199,751.96	2,822.03	202,573.99	685,409.99	4,068.12	689,478.11	3,056,000	22.56%	30,000	13.56%
Customer Service Hauppauge - 10003	93,631.62	2,198.05	95,829.67	301,660.02	11,332.38	312,992.40	1,270,000	24.65%	80,000	14.17%
Customer Service Administration - 10004	19,085.77		19,085.77	62,978.06	-	62,978.06	311,000	20.25%	-	0.00%
Workforce Technology - 10005	22,342.50	70.25	22,412.75	103,336.88	193.20	103,530.08	466,000	22.22%	2,000	9.66%
Customer Service Meter Shop - 10006	45,617.20		45,617.20	148,945.18	-	148,945.18	677,000	22.00%	4,500	0.00%
Customer Service Meter Division - 10008	54,966.41		54,966.41	204,060.60	102.74	204,163.34	887,000	23.02%	20,000	0.51%
Customer Service Field Division - 10009	133,213.17	3,820.11	137,033.28	434,331.80	13,645.37	447,977.17	1,959,000	22.87%	80,000	17.06%
<b>Customer Service Division Total</b>	<b>568,608.63</b>	<b>8,910.44</b>	<b>577,519.07</b>	<b>1,940,722.53</b>	<b>29,341.81</b>	<b>1,970,064.34</b>	<b>8,626,000</b>	<b>22.84%</b>	<b>216,500</b>	<b>13.55%</b>
<b><u>Executive Division</u></b>										
Auditing - 50002	11,999.28		11,999.28	36,166.95	-	36,166.95	165,000	21.92%	-	0.00%
Policy and Planning - 50003	76,821.72		76,821.72	247,538.58	-	247,538.58	1,024,000	24.17%	-	0.00%
Board Members - 50004	8,153.88		8,153.88	26,500.11	-	26,500.11	107,000	24.77%	-	0.00%
Office of The Chief Executive Officer - 50005	24,550.49		24,550.49	90,812.83	11.26	90,824.09	485,000	18.73%	2,000	0.56%
Strategic Initiatives - 50006	46,753.44		46,753.44	169,060.89	-	169,060.89	761,000	22.22%	-	0.00%
Communications - 50007	16,749.20		16,749.20	56,484.77	-	56,484.77	259,000	21.81%	-	0.00%
Risk Management - 51001	21,810.16		21,810.16	71,970.83	-	71,970.83	290,000	24.82%	-	0.00%
Legal - 51002	36,427.94		36,427.94	120,766.84	60.60	120,827.44	472,000	25.60%	-	#DIV/0!
Laboratory Administrative - 60001	92,609.72		92,609.72	306,513.78	-	306,513.78	1,326,000	23.12%	1,000	0.00%
Laboratory Organic - 60006	61,856.33	208.81	62,065.14	196,308.10	273.48	196,581.58	751,000	26.18%	500	54.70%
Laboratory Overhead - 60008	10,807.20		10,807.20	35,663.76	-	35,663.76	148,000	24.10%	-	0.00%
Bacteriology/Sample Collections - 60009	36,767.23	122.84	36,890.07	114,951.49	505.94	115,457.43	480,000	24.05%	7,000	7.23%
Chromotography & Inorganic - 60010	70,846.60		70,846.60	233,295.90	59.54	233,355.44	924,000	25.25%	500	11.91%
<b>Executive Division Total</b>	<b>516,153.19</b>	<b>331.65</b>	<b>516,484.84</b>	<b>1,706,034.83</b>	<b>910.82</b>	<b>1,706,945.65</b>	<b>7,192,000</b>	<b>23.73%</b>	<b>11,000</b>	<b>8.28%</b>

	<b>Actual Month Ending 8/31/2020</b>			<b>Year to Date</b>						
	Base Amount	Overtime	Total	Base Amount	Overtime	Total	Projected 2021 Total Payroll	% Expended	Projected 2021 Overtime Payroll	% Expended
<b>Finance Division</b>										
Accounting - 40001	126,999.28	98.80	127,098.08	416,725.35	339.61	417,064.96	1,719,000	24.26%	2,000	16.98%
Purchasing - 40003	32,171.00		32,171.00	106,201.29	-	106,201.29	402,000	26.42%	-	0.00%
Finance - 40004	23,179.20		23,179.20	78,777.52	-	78,777.52	321,000	24.54%	-	0.00%
<b>Finance Division Total</b>	<b>182,349.48</b>	<b>98.80</b>	<b>182,448.28</b>	<b>601,704.16</b>	<b>339.61</b>	<b>602,043.77</b>	<b>2,442,000</b>	<b>24.65%</b>	<b>2,000</b>	<b>16.98%</b>
<b>Operations Division</b>										
Waterworks Division - 20001	21,633.04		21,633.04	71,385.11	-	71,385.11	287,000	24.87%	-	0.00%
Engineering - 21001	183,014.82	932.33	183,947.15	701,114.36	3,350.70	704,465.06	2,912,000	24.19%	30,000	11.17%
Production Control Bayshore - 22001	467,558.30	94,183.53	561,741.83	1,531,902.01	249,322.27	1,781,224.28	6,951,000	25.63%	575,000	43.36%
Production Control Coram - 22002	76,823.83	22,530.50	99,354.33	249,341.09	54,762.69	304,103.78	1,240,000	24.52%	127,000	43.12%
Production Control Westhampton - 22003	106,196.34	23,087.59	129,283.93	362,933.65	55,852.91	418,786.56	1,592,000	26.31%	100,000	55.85%
Production Control Easthampton - 22004	13,625.44	3,895.88	17,521.32	44,182.28	11,924.89	56,107.17	274,000	20.48%	18,000	66.25%
Construction Maint Office (Oakdale) - 23001	197,048.12		197,048.12	652,396.45	187.52	652,583.97	2,705,000	24.13%	20,000	0.94%
Construction Maint (Oakdale) - 23002 & 23003	491,350.71	16,458.45	507,809.16	1,618,530.62	70,678.60	1,689,209.22	7,277,000	23.21%	375,000	18.85%
Construction Maint Serv/Maint (Huntington) - 24001	64,207.53	657.27	64,864.80	209,615.18	9,595.93	219,211.11	893,000	24.55%	50,000	19.19%
Construction Maint Serv/Maint (Coram) - 26001 & 26002	76,802.52	563.87	77,366.39	247,454.69	4,055.19	251,509.88	1,150,000	21.87%	50,000	8.11%
Construction Maint Service (Westhampton) - 27001	14,081.10		14,081.10	46,263.81	-	46,263.81	526,000	8.80%	50,000	0.00%
Construction Maint - Maint (Westhampton) - 27002	97,241.00	5,363.68	102,604.68	323,165.77	22,530.92	345,696.69	1,430,000	24.17%	-	#DIV/0!
Construction Maint Serv/Maint (Easthampton) - 28001	52,529.62	1,133.65	53,663.27	187,967.41	3,608.54	191,575.95	924,000	20.73%	15,000	24.06%
<b>Operations Division Total</b>	<b>1,862,112.37</b>	<b>168,806.75</b>	<b>2,030,919.12</b>	<b>6,246,252.43</b>	<b>485,870.16</b>	<b>6,732,122.59</b>	<b>28,161,000</b>	<b>23.91%</b>	<b>1,410,000</b>	<b>34.46%</b>
<b>Totals</b>	<b>3,547,489.97</b>	<b>182,371.14</b>	<b>3,729,861.11</b>	<b>11,947,061.52</b>	<b>526,819.43</b>	<b>12,473,880.95</b>	<b>52,363,000</b>	<b>23.82%</b>	<b>1,688,500</b>	<b>31.20%</b>

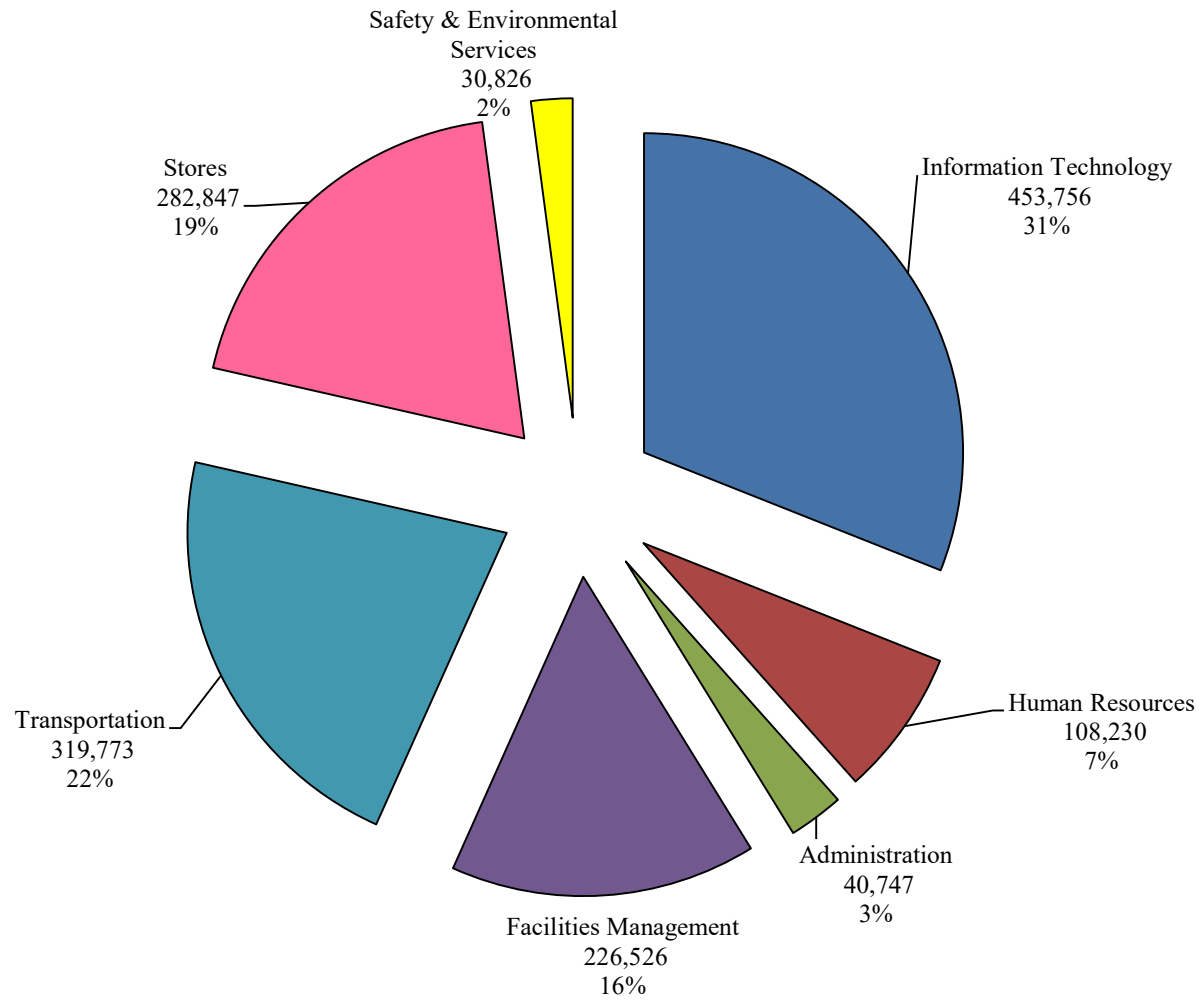
**Total Payroll as of August 31, 2020**  
**\$12,473,880.95**



**Total Overtime Summary as of August 31, 2020**  
**\$526,819.43**

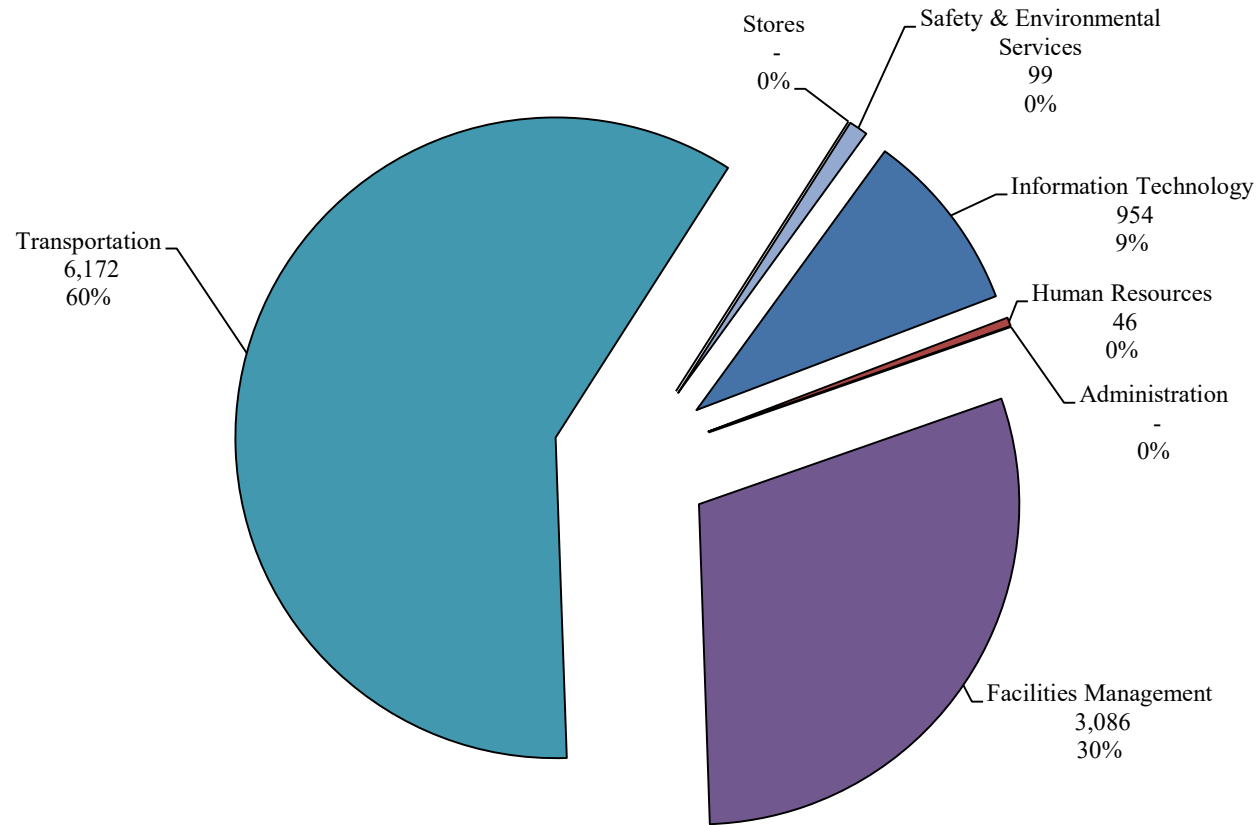


**Administrative Division Total Payroll as of August 31, 2020**  
**\$1,462,704.60**

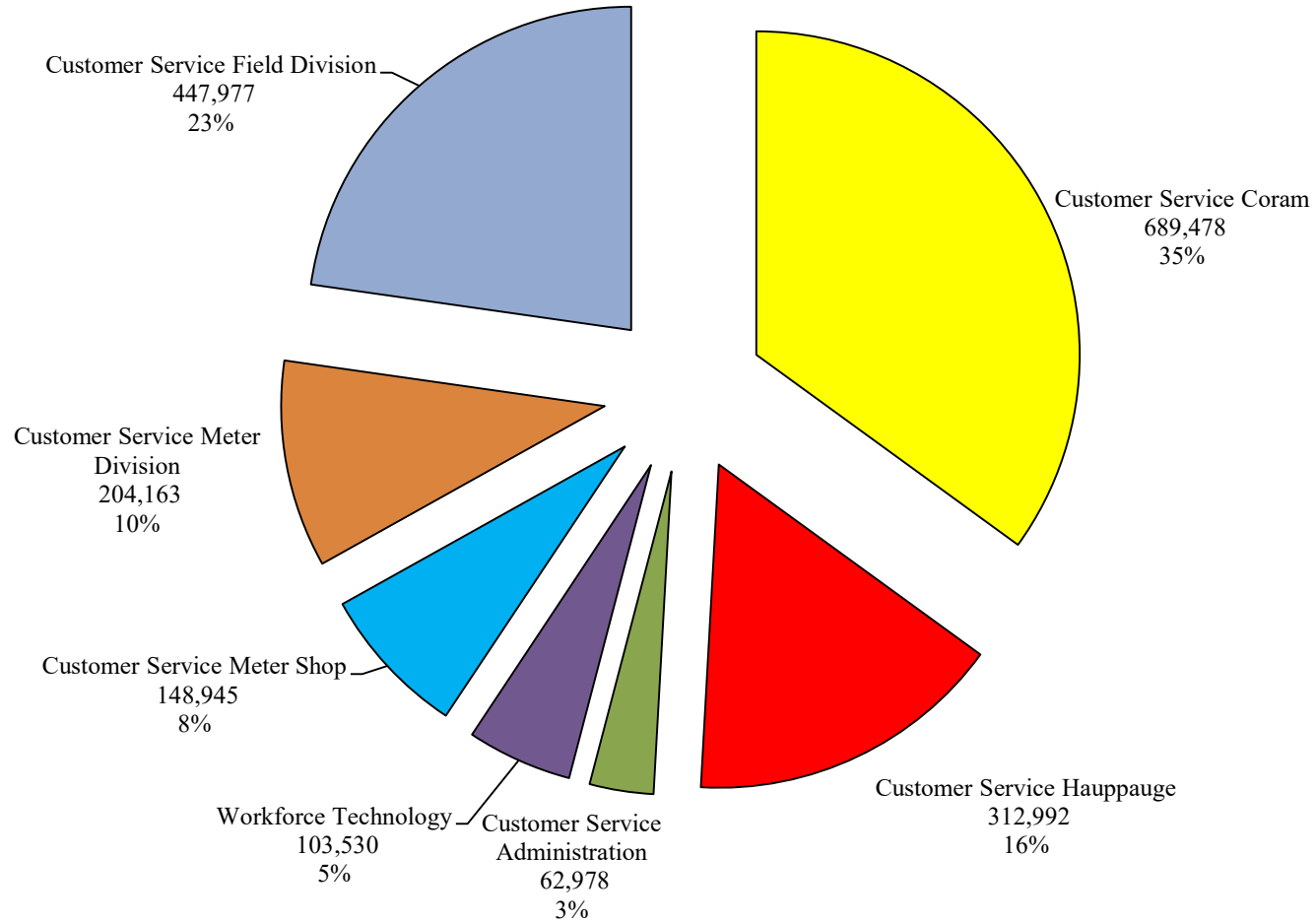




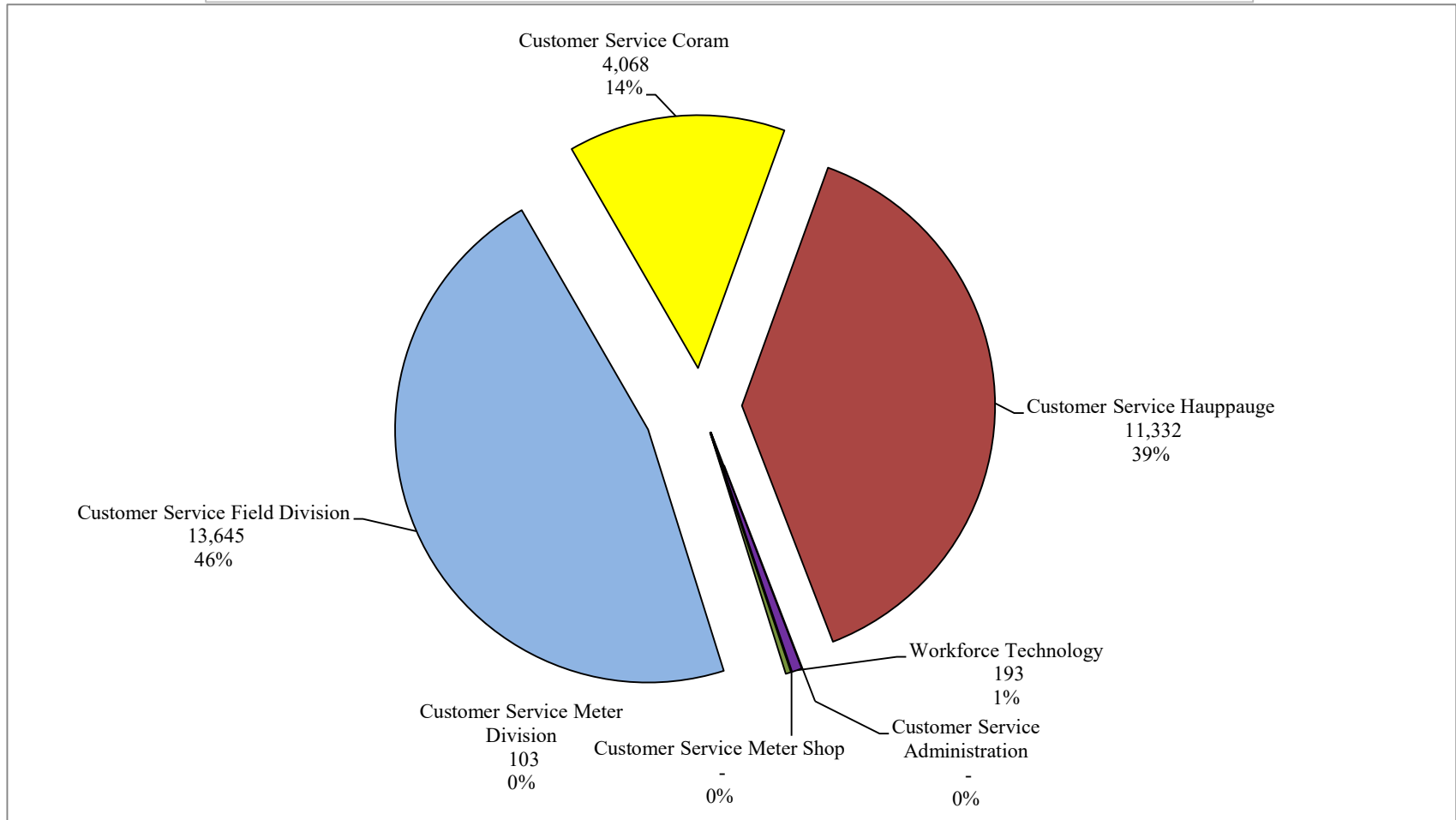
**Administrative Division Total Overtime as of August 31, 2020**  
**\$10,357.03**



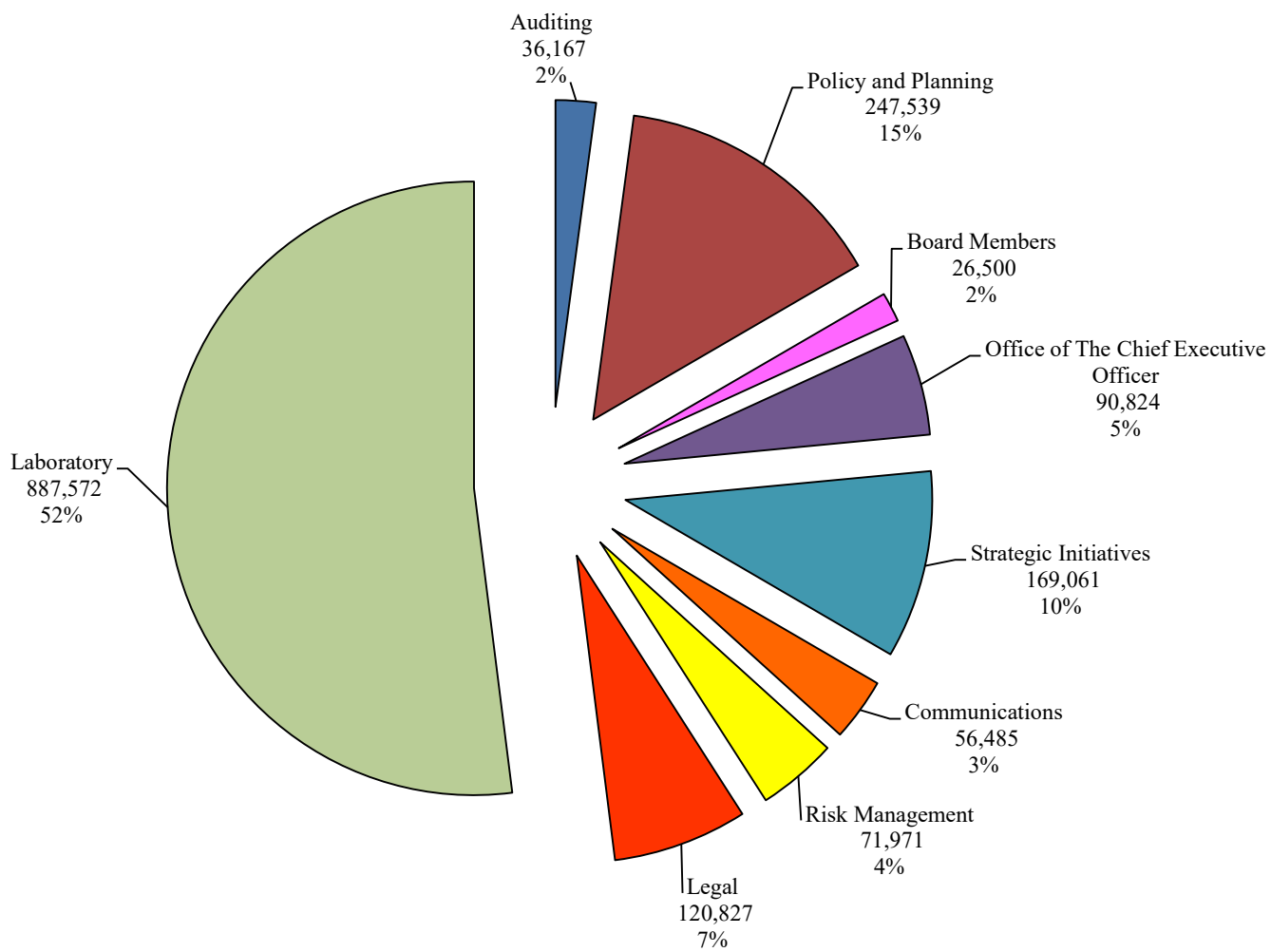
**Customer Service Division Total Payroll as of August 31, 2020**  
**\$1,970,064.34**



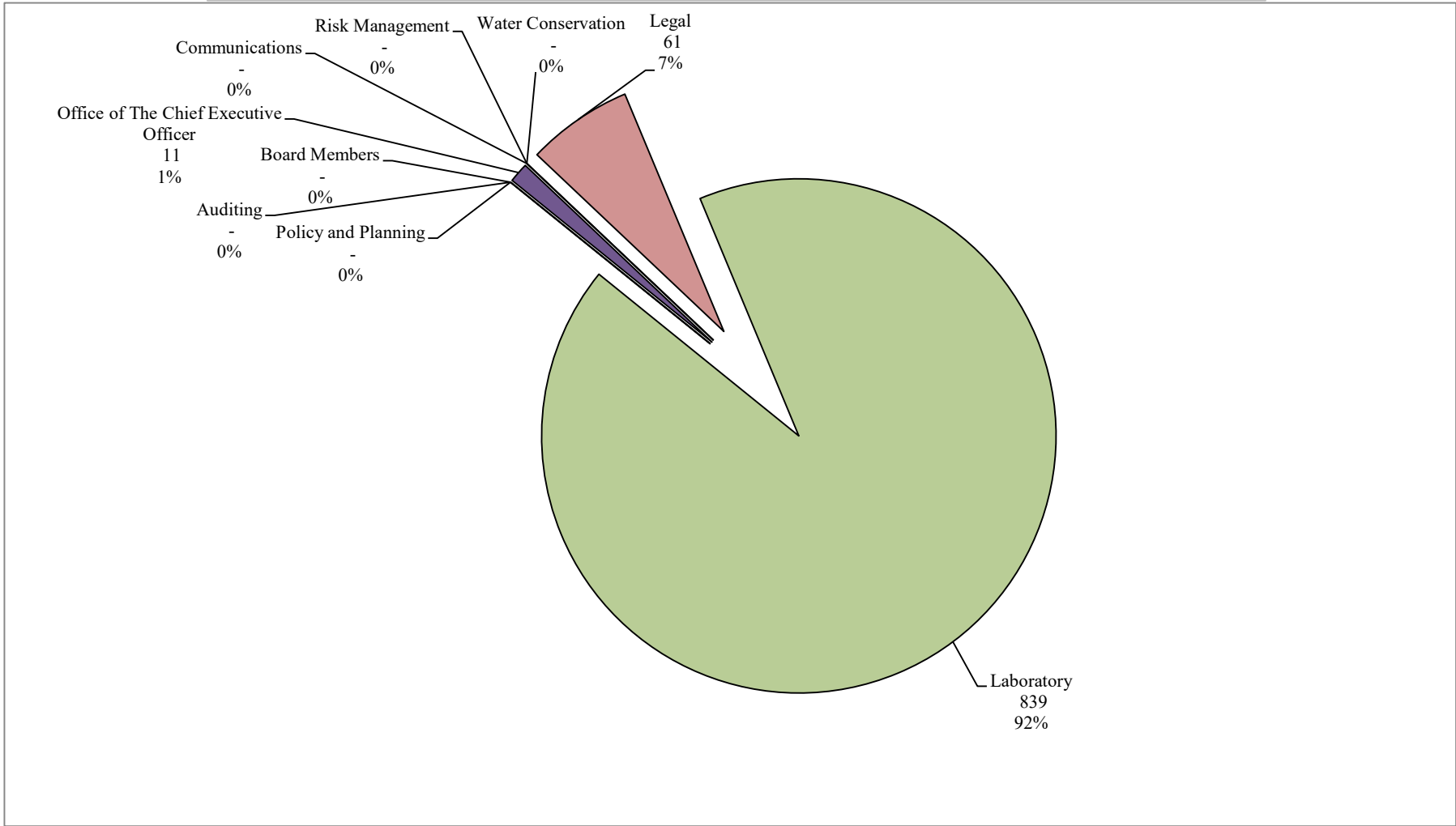
**Customer Service Division Total Overtime as of August 31, 2020**  
**\$29,341.81**



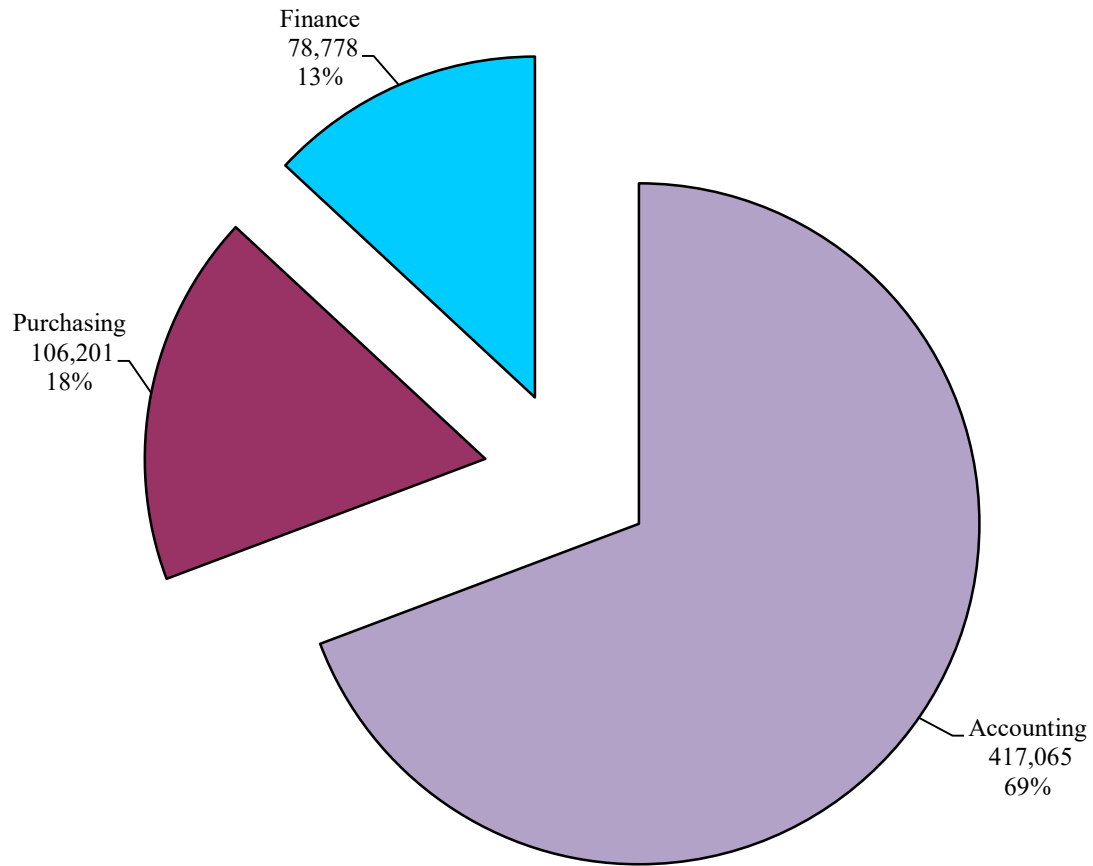
**Executive Division Total Payroll as of August 31, 2020**  
**\$1,706,945.65**



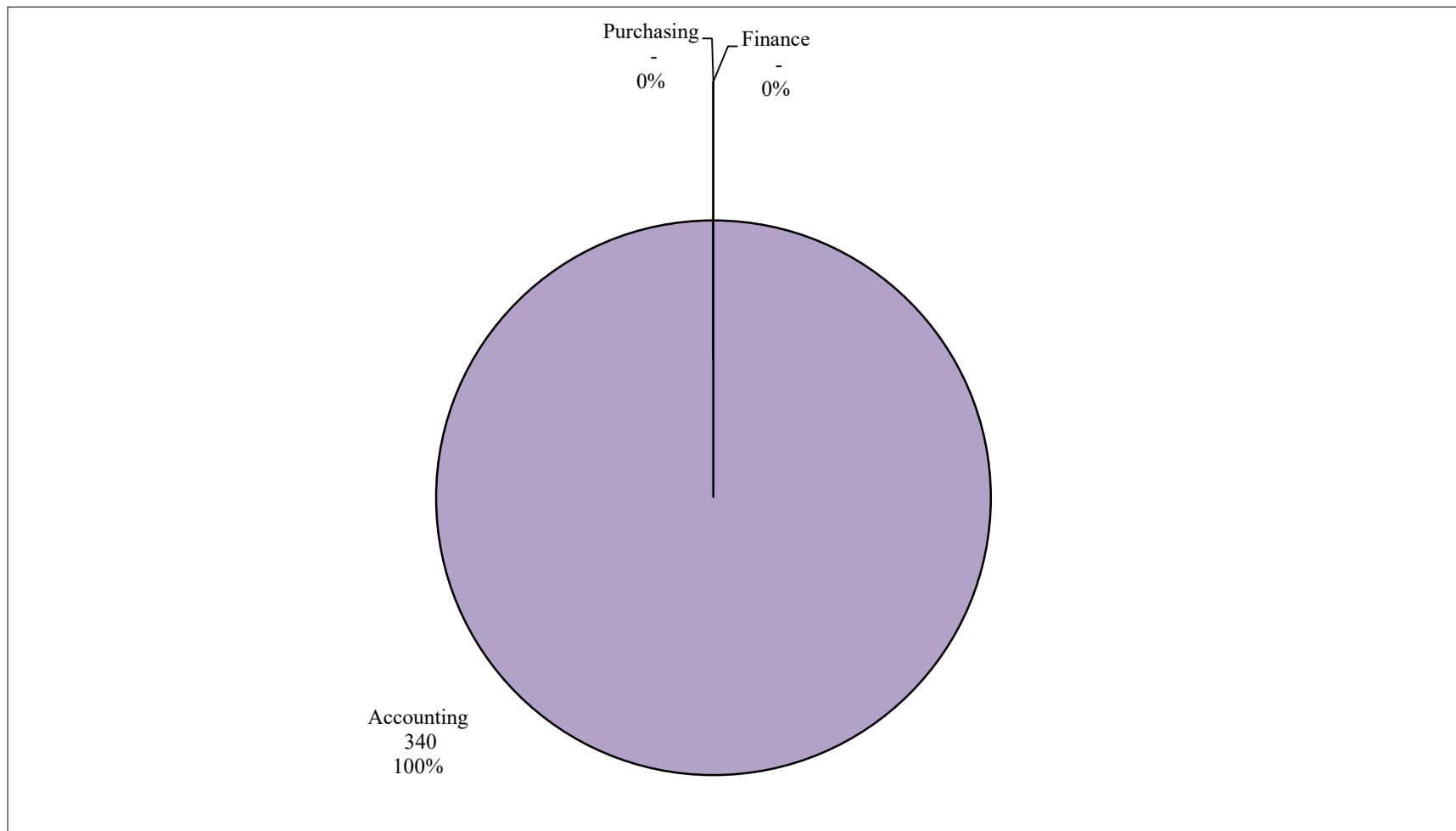
**Executive Division Total Overtime as of August 31, 2020**  
**\$910.82**



**Finance Division Total Payroll as of August 31, 2020**  
**\$602,043.77**

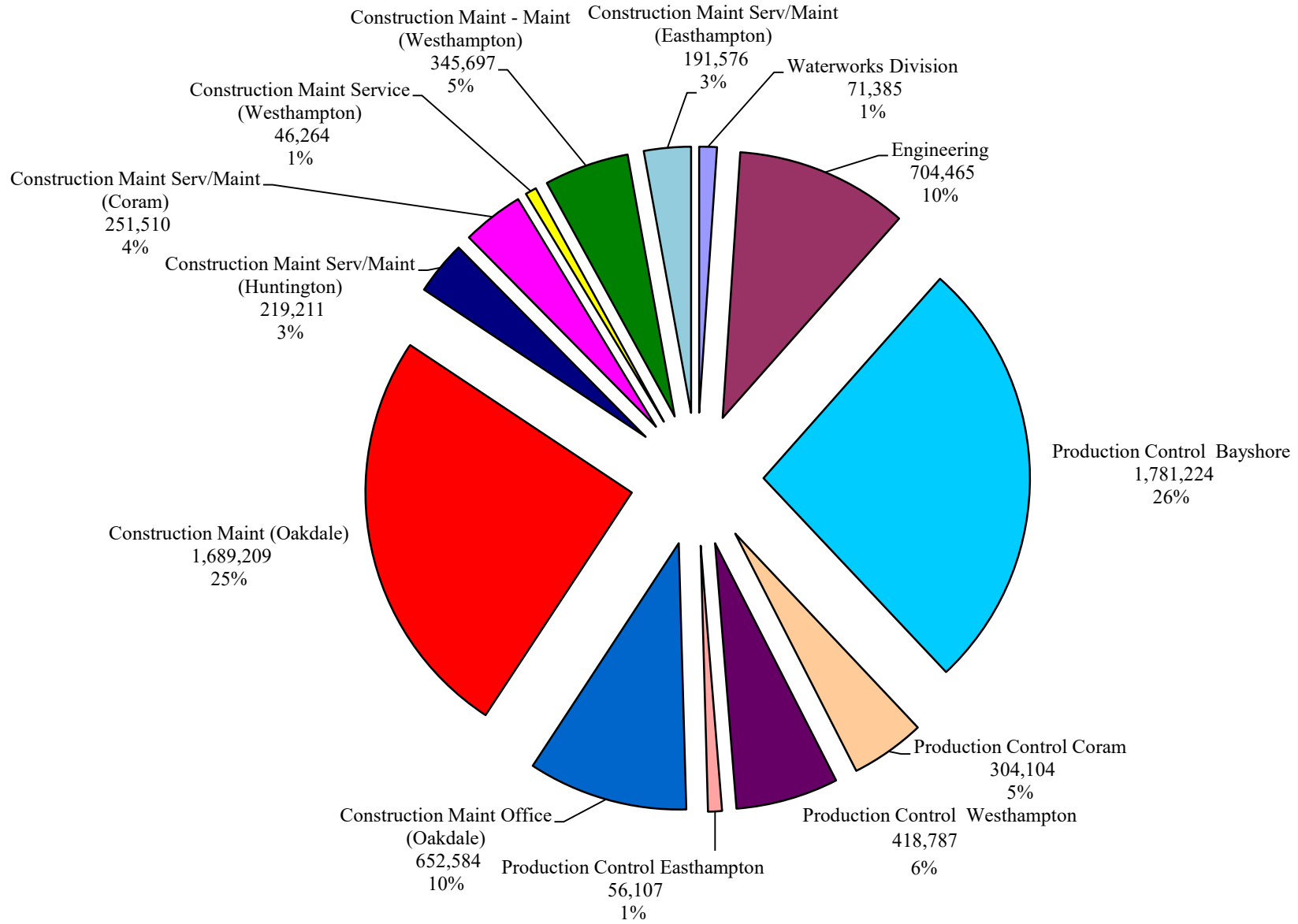


**Finance Division Total Overtime as of August 31, 2020**  
**\$339.61**



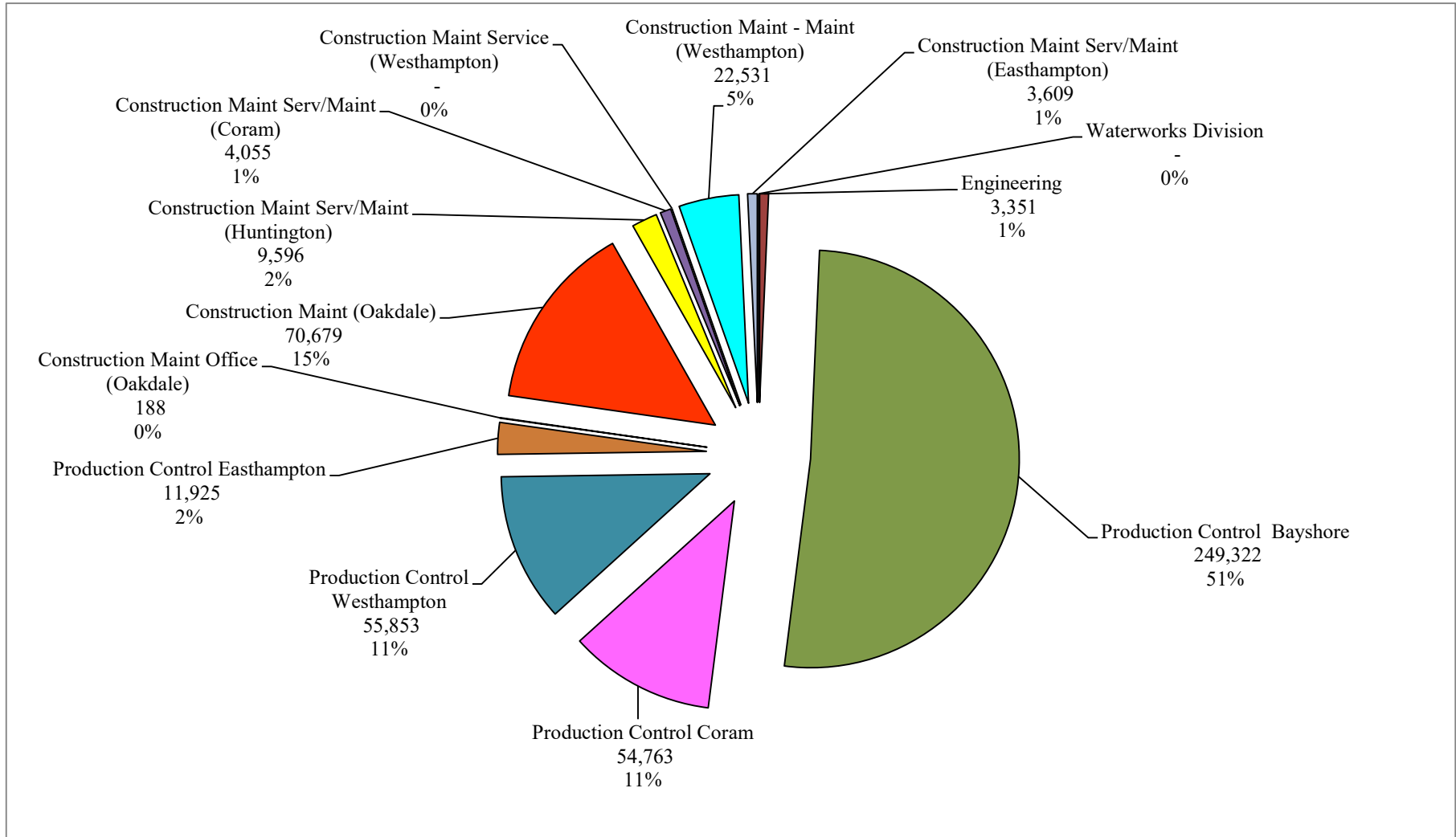
## Operations Division Total Payroll as of August 31, 2020

### \$6,732,122.59





**Operations Division Total Overtime as of August 31, 2020**  
**\$485,870.16**



**Suffolk County Water Authority  
Overtime Hours by Category  
For the Three Months Ending August 31, 2020  
Period 05/26/2020 - 8/24/2020**

AC - Absence Coverage  
EW - Emergency Work  
SOT - Scheduled OT

<b>Cost Center</b>	<b>CCTR Name</b>	<b>OT Description</b>	<b>Hours</b>
10002	Customer Service Coram	AC - VAC/SICK/WCOMP/DISAB	64.50
10002	Customer Service Coram	AC - HOLIDAY	6.00
10002	Customer Service Coram	EW - BRK/SVC/HYD/EQP FAIL	9.00
10002	Customer Service Coram	SOT - TRAINING / TESTING	0.25
10002	Customer Service Coram	SOT - CONTINUATION OF WORK	3.50
<b>10002 Total</b>			<b>83.25</b>
10003	Customer Service Hauppauge	AC - VAC/SICK/WCOMP/DISAB	38.25
10003	Customer Service Hauppauge	EW - BRK/SVC/HYD/EQP FAIL	91.25
10003	Customer Service Hauppauge	SOT - CONTINUATION OF WORK	16.00
<b>10003 Total</b>			<b>145.50</b>
10005	Customer Service Workforce Technology	SOT - CONTINUATION OF WORK	2.75
<b>10005 Total</b>			<b>2.75</b>
10008	Customer Service Metering	EW - BRK/SVC/HYD/EQP FAIL	2.00
10008	Customer Service Metering	SOT - CONTINUATION OF WORK	0.25
<b>10008 Total</b>			<b>2.25</b>
10009	Customer Service Field	AC - VAC/SICK/WCOMP/DISAB	11.50
10009	Customer Service Field	EW - BRK/SVC/HYD/EQP FAIL	169.25
10009	Customer Service Field	SOT - TRAINING / TESTING	1.50
10009	Customer Service Field	SOT - CONTINUATION OF WORK	13.75
<b>10009 Total</b>			<b>196.00</b>
21001	Engineering	SOT - CONTINUATION OF WORK	41.75
21001	Engineering	SOT - BACKLOG WORK	1.00
21001	Engineering	SOT - OFF SHIFT	14.50
<b>21001 Total</b>			<b>57.25</b>
22001	Production Control-Bayshore	AC - VAC/SICK/WCOMP/DISAB	1,478.00
22001	Production Control-Bayshore	AC - HOLIDAY	96.00
22001	Production Control-Bayshore	EW - WEATHER EVENTS	233.75
22001	Production Control-Bayshore	EW - ACCDNT/FIRE/PROP DMG	2.00
22001	Production Control-Bayshore	EW - BRK/SVC/HYD/EQP FAIL	1,483.75
22001	Production Control-Bayshore	EW - TCR/GWR/OTHR TESTING	1.00
22001	Production Control-Bayshore	SOT - TRAINING / TESTING	2.75

22001	Production Control-Bayshore	SOT - CONTINUATION OF WORK	248.00
<b>22001 Total</b>			<b>3,545.25</b>
22002	Production Control-Coram	AC - VAC/SICK/WCOMP/DISAB	520.00
22002	Production Control-Coram	AC - HOLIDAY	44.00
22002	Production Control-Coram	EW - WEATHER EVENTS	11.00
22002	Production Control-Coram	EW - BRK/SVC/HYD/EQP FAIL	208.25
22002	Production Control-Coram	EW - TCR/GWR/OTHR TESTING	6.75
22002	Production Control-Coram	SOT - CONTINUATION OF WORK	1.00
<b>22002 Total</b>			<b>791.00</b>
22003	Production Control-Westhampton	AC - VAC/SICK/WCOMP/DISAB	280.75
22003	Production Control-Westhampton	AC - HOLIDAY	81.00
22003	Production Control-Westhampton	EW - WEATHER EVENTS	17.00
22003	Production Control-Westhampton	EW - BRK/SVC/HYD/EQP FAIL	299.25
22003	Production Control-Westhampton	SOT - TRAINING / TESTING	2.00
22003	Production Control-Westhampton	SOT - CONTINUATION OF WORK	24.50
<b>22003 Total</b>			<b>704.50</b>
22004	Production Control-Easthampton	AC - VAC/SICK/WCOMP/DISAB	136.00
22004	Production Control-Easthampton	AC - HOLIDAY	16.50
22004	Production Control-Easthampton	EW - BRK/SVC/HYD/EQP FAIL	13.50
<b>22004 Total</b>			<b>166.00</b>
23001	CM Oakdale Office	EW - BRK/SVC/HYD/EQP FAIL	2.25
23001	CM Oakdale Office	SOT - CONTINUATION OF WORK	0.50
<b>23001 Total</b>			<b>2.75</b>
23002	CM Oakdale Service	AC - VAC/SICK/WCOMP/DISAB	8.00
23002	CM Oakdale Service	SOT - CONTINUATION OF WORK	2.75
23002	CM Oakdale Service	SOT - OFF SHIFT	75.00
<b>23002 Total</b>			<b>85.75</b>
23003	CM Oakdale Maintenance	EW - BRK/SVC/HYD/EQP FAIL	906.50
23003	CM Oakdale Maintenance	SOT - CONTINUATION OF WORK	50.00
23003	CM Oakdale Maintenance	SOT - OFF SHIFT	20.25
<b>23003 Total</b>			<b>976.75</b>
24001	CM Huntington Serv/Maint	EW - WEATHER EVENTS	4.00
24001	CM Huntington Serv/Maint	EW - BRK/SVC/HYD/EQP FAIL	155.25
<b>24001 Total</b>			<b>159.25</b>
26002	CM Coram Maintenance	EW - BRK/SVC/HYD/EQP FAIL	57.25
26002	CM Coram Maintenance	SOT - CONTINUATION OF WORK	2.00
<b>26002 Total</b>			<b>59.25</b>
27002	CM Westhampton Maintenance	EW - BRK/SVC/HYD/EQP FAIL	299.25
27002	CM Westhampton Maintenance	SOT - CONTINUATION OF WORK	48.50
<b>27002 Total</b>			<b>347.75</b>

28001	CM Easthampton Service/Maint	AC - VAC/SICK/WCOMP/DISAB	69.00
28001	CM Easthampton Service/Maint	EW - BRK/SVC/HYD/EQP FAIL	70.50
28001	CM Easthampton Service/Maint	SOT - CONTINUATION OF WORK	4.50
<b>28001 Total</b>			<b>144.00</b>
31002	Information Technology	AC - VAC/SICK/WCOMP/DISAB	14.00
<b>31002 Total</b>			<b>14.00</b>
31003	Human Resources	SOT - CONTINUATION OF WORK	1.25
<b>31003 Total</b>			<b>1.25</b>
32001	Facilities Management	EW - COVID19	59.25
32001	Facilities Management	SOT - CONTINUATION OF WORK	11.00
32001	Facilities Management	SOT - OFF SHIFT	3.00
<b>32001 Total</b>			<b>73.25</b>
32002	Transportation	AC - VAC/SICK/WCOMP/DISAB	19.00
32002	Transportation	SOT - CONTINUATION OF WORK	104.00
<b>32002 Total</b>			<b>123.00</b>
32005	Safety	SOT - CONTINUATION OF WORK	1.75
<b>32005 Total</b>			<b>1.75</b>
40001	Accounting	SOT - CONTINUATION OF WORK	7.00
<b>40001 Total</b>			<b>7.00</b>
50005	Office of CEO	SOT - CONTINUATION OF WORK	0.25
<b>50005 Total</b>			<b>0.25</b>
51002	Legal	SOT - CONTINUATION OF WORK	1.00
<b>51002 Total</b>			<b>1.00</b>
60006	Lab Organic	SOT - CONTINUATION OF WORK	1.25
60006	Lab Organic	SOT - BACKLOG WORK	3.00
<b>60006 Total</b>			<b>4.25</b>
60009	Lab Bacteriology & Sample Collection	AC - HOLIDAY	4.25
60009	Lab Bacteriology & Sample Collection	EW - TCR/GWR/OTHR TESTING	7.75
<b>60009 Total</b>			<b>12.00</b>
60010	Lab Chromotography & Inorganic	SOT - CONTINUATION OF WORK	1.50
<b>60010 Total</b>			<b>1.50</b>
<b>Grand Total</b>			<b><u>7,708.50</u></b>

## Comparative Overtime

Cost Center	For the 3 Months Ending 08/31/2020	For the 3 Months Ending 08/31/2019
Information Technology -31002	953.94	3,127.31
Human Resources - 31003	46.15	53.85
Administration-31005	-	-
Facilities Management - 32001	3,086.21	802.05
Transportation - 32002	6,171.66	5,321.31
Stores - 32003	-	78.00
Safety & Environmental Services - 32005	99.07	-
<b>Total Administrative</b>	<b>10,357.03</b>	<b>9,382.52</b>
Customer Service Coram - 10002	4,068.12	11,146.40
Customer Service Hauppauge - 10003	11,332.38	22,273.72
Customer Service Administration - 10004	-	-
Workforce Technology - 10005	193.20	165.04
Customer Service Meter Shop - 10006	-	-
Customer Service Meter Division - 10008	102.74	3,490.70
Customer Service Field Division - 10009	13,645.37	25,471.90
<b>Total Customer Service</b>	<b>29,341.81</b>	<b>62,547.76</b>
Auditing - 50002	-	-
Watershed Planning - 50003	-	589.57
Board Members - 50004	-	-
Office of The Chief Executive Officer - 50005	11.26	573.23
Strategic Initiatives - 50006	-	-
Communications - 50007	-	-
Risk Management - 51001	-	-
Legal - 51002	60.60	-
Laboratory Administrative - 60001	-	1,950.89
Laboratory Organic - 60006	273.48	-
Laboratory Overhead - 60008	-	-
Bacteriology/Sample Collections - 60009	505.94	1,580.25
Chromotography & Inorganic - 60010	59.54	69.48
<b>Total Executive</b>	<b>910.82</b>	<b>4,763.42</b>

**Comparative Overtime**

<b>Cost Center</b>	<b>For the 3 Months Ending 08/31/2020</b>	<b>For the 3 Months Ending 08/31/2019</b>
Accounting - 40001	339.61	1,586.09
Purchasing - 40003	-	-
Finance - 40004	-	-
<b>Total Finance</b>	<b>339.61</b>	<b>1,586.09</b>
Waterworks Division - 20001	-	-
Engineering - 21001	3,350.70	1,150.33
Production Control Bayshore - 22001	249,322.27	305,679.41
Production Control Coram - 22002	54,762.69	88,257.38
Production Control Westhampton - 22003	55,852.91	86,196.01
Production Control Easthampton - 22004	11,924.89	11,147.98
Construction Maint Office (Oakdale) - 23001	187.52	5,562.84
Construction Maint (Oakdale) - 23002 & 23003	70,678.60	79,605.19
Construction Maint Serv/Maint (Huntington) - 24001	9,595.93	12,455.92
Construction Maint Serv/Maint (Coram) - 26001 & 26002	4,055.19	13,190.64
Construction Maint Service (Westhampton) - 27001	-	-
Construction Maint - Maint (Westhampton) - 27002	22,530.92	16,207.01
Construction Maint Serv/Maint (Easthampton) - 28001	3,608.54	1,083.33
<b>Total Operations</b>	<b>485,870.16</b>	<b>620,536.04</b>
<b>Total</b>	<b>526,819.43</b>	<b>698,815.83</b>