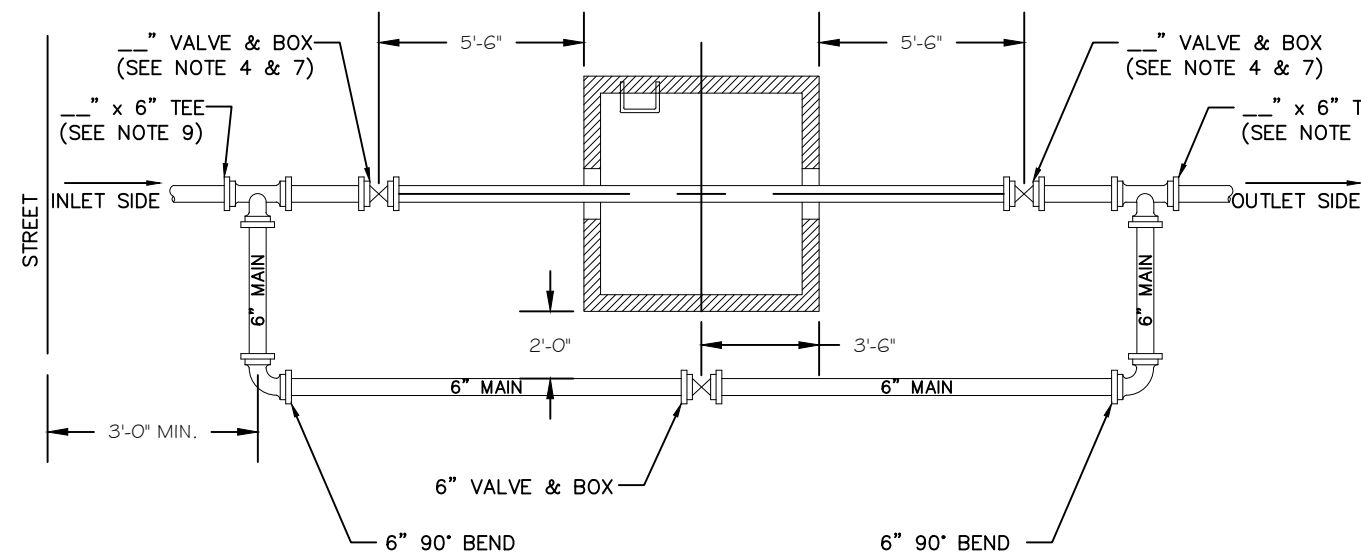


VAULT AND BY-PASS PIPING NOTES:

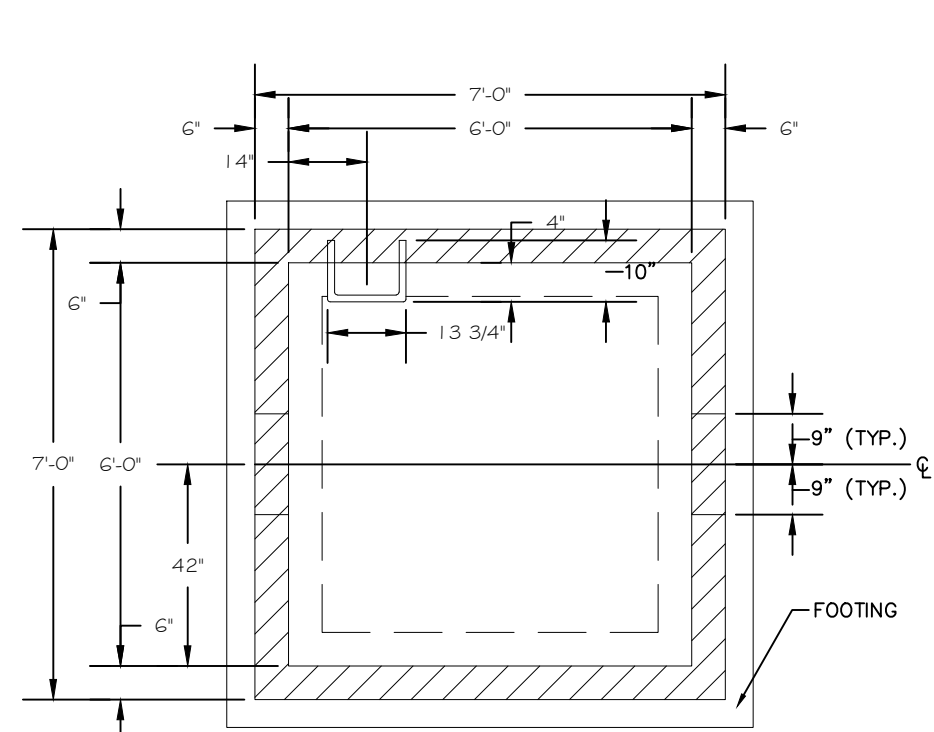
1. VAULT, VAULT PIPING AND BY-PASS TO BE INSTALLED BY OWNER AS SHOWN (SEE TYPICAL VAULT AND BY-PASS PIPING.)
2. ALL MECHANICAL JOINT BENDS AND FITTINGS MUST BE RETAINED WITH RETAINING GLANDS, THREADED RODDING AND SUFFICIENT BLOCKING.
3. ALL PIPING MUST BE DUCTILE IRON CLASS 52 PIPING.
4. INLET AND OUTLET VALVES, PLUS PIPING BETWEEN VALVES, MUST EQUAL SIZE OF METER. IF REDUCTION IS REQUIRED, OWNER IS RESPONSIBLE FOR PROVIDING ADEQUATE SPACE SAVER FLANGES TO ACCOMMODATE METER. METER SIZE IS TO BE DETERMINED BY THE SUFFOLK COUNTY WATER AUTHORITY.
5. ALL VALVES TO OPEN COUNTERCLOCKWISE (RIGHT HANDED VALVES).
6. BY-PASS PIPING CAN BE ON EITHER SIDE OF VAULT DEPENDING ON FIELD CONDITIONS AND FIRE LINE LOCATION.
7. INLET AND OUTLET VALVES TO BE IN LINE WITH EACH OTHER AND AT THE SAME ELEVATION AS WINDOWS IN VAULT. IN ADDITION, PIPING MUST BE CENTERED THROUGH EIGHTEEN (18") INCH SQUARE WINDOW.
8. FIRE LINE TO BE INSTALLED ON OPPOSITE SIDE OF METER VAULT BY-PASS.
9. A SIX (6") INCH PIPING IS TO BE USED ON ALL BY-PASSES AND A FOUR (4") INCH BY-PASS WILL BE ACCEPTABLE ON A FOUR (4") INCH SERVICE.
10. AFTER INSTALLING PIPING THROUGH METER VAULT, THE OWNER IS REQUIRED TO BRICK UP AND CEMENT BOTH WINDOWS OF VAULT.
11. ALL PIPING THROUGH METER VAULT SHALL BE DONE IN A CONTINUOUS FASHION WITHOUT ANY MECHANICAL FITTINGS.

GENERAL INFORMATION FOR VAULT CONSTRUCTION

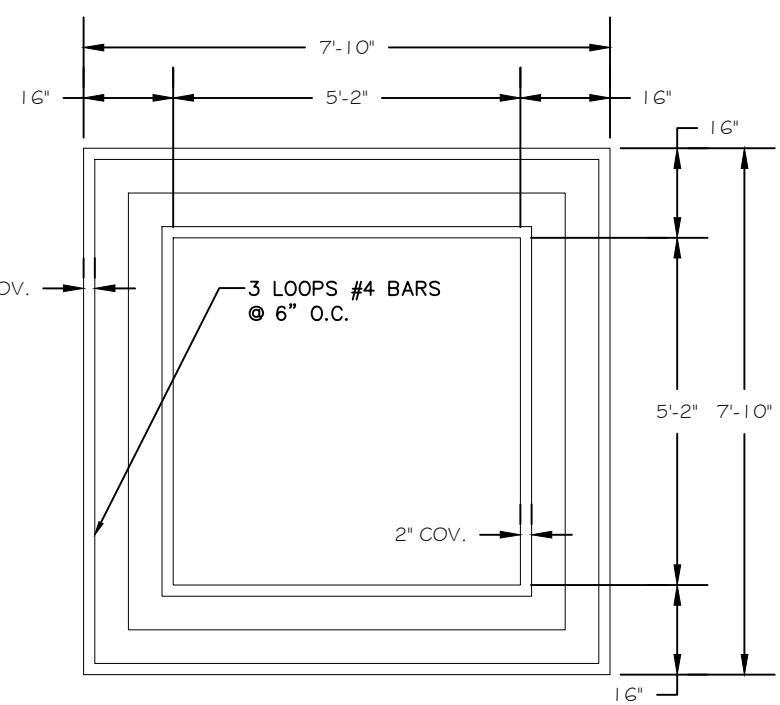
1. CONCRETE: 4,000 P.S.I. AT 28 DAYS
2. REINFORCING: ASTM A-615 - GRADE 40
3. WELDED WIRE FABRIC: ASTM A-82 & A-85
4. ALL FORMS TO BE OILED PRIOR TO POUR AND REMOVED.
FINISHED WALLS TO HAVE CLEAN SURFACES AND FREE OF
ANY SPLINTERS AND PROTRUSIONS
5. FOOTING POUR TO BE SEPARATE FROM WALL POUR.
6. ALL LIFTING HOLES TO BE PROPERLY MORTARED FLUSH TO WALLS.
7. MA INDUSTRIES, INC. COPOLYMER POLYPROPYLENE PLASTIC MANHOLE
STEP #P2-PF. (DETAIL NOT SHOWN)
8. MEASUREMENTS SHOWN IN CIRCLES ("PLAN WALL DETAIL") ARE FOR
PLASTIC STEP #P2-PF (MA INDUSTRIES)



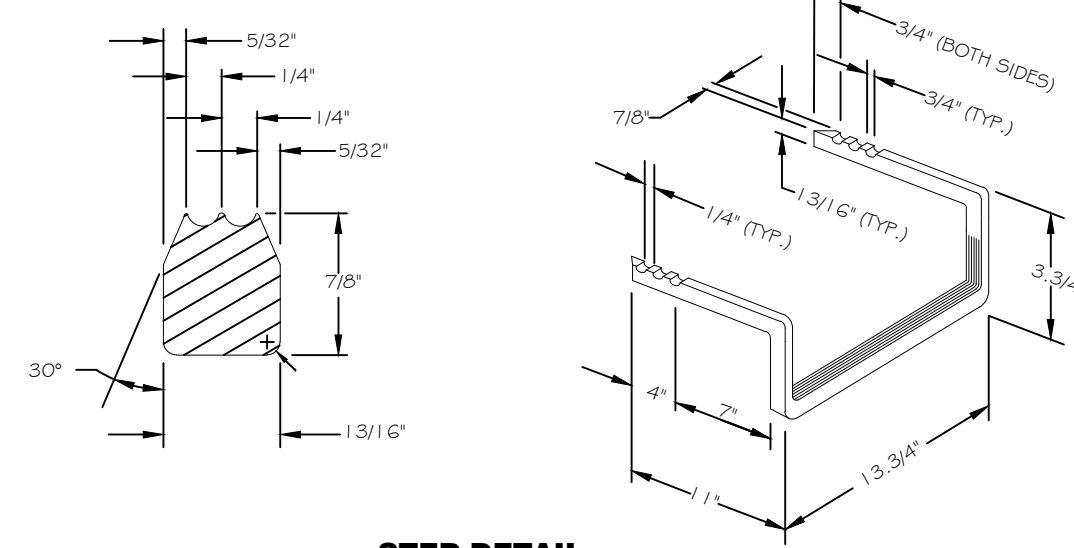
VAULT AND BY-PASS PIPING DETAIL
NOT TO SCALE



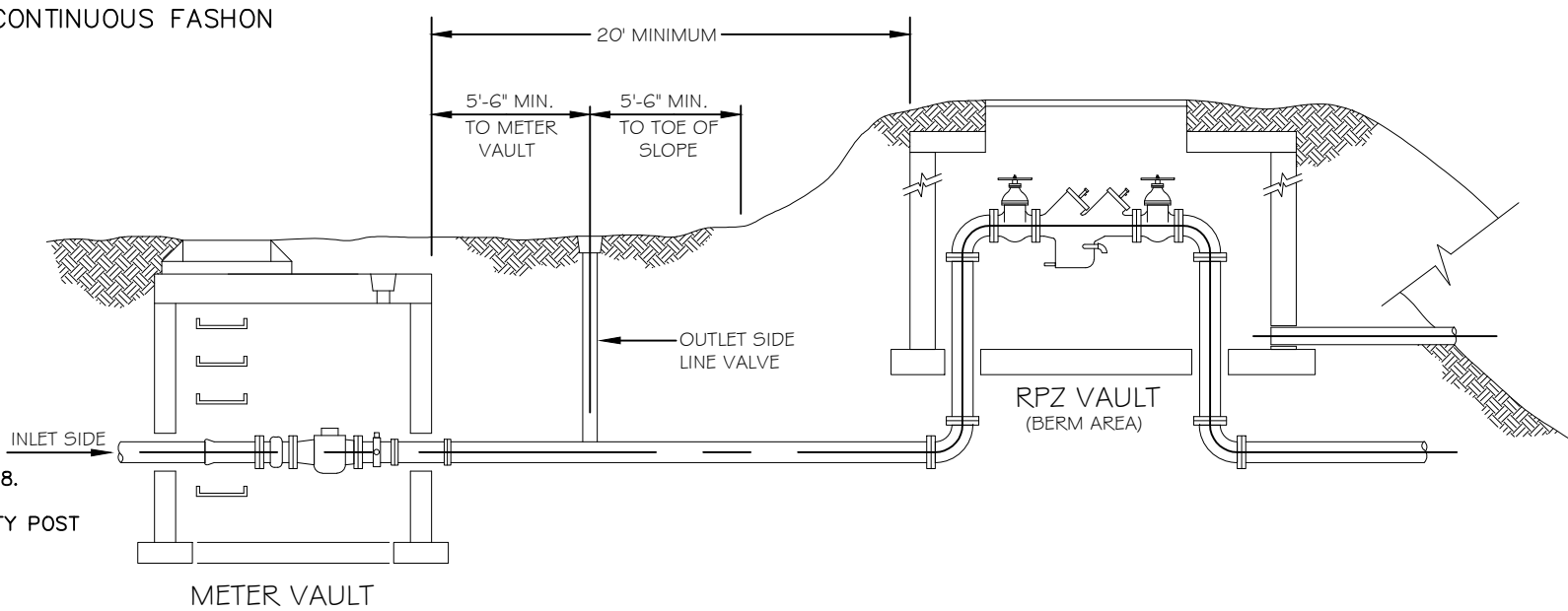
PLAN - WALL
NOT TO SCALE



PLAN - FOOTING
NOT TO SCALE



STEP DETAIL
(DROP FRONT-OPEN END)
NOT TO SCALE




RELATIONSHIP OF METER TO RPZ VAULT

THIS VAULT TO BE USED FOR 6" & 8" METER SETTING

NOTICE:

THE AUTHORITY WILL NOT CONDUCT AN INSPECTION OF THE METER VAULT UNTIL THE CUSTOMER HAS APPLIED FOR SERVICE AND A LETTER OF WATER DEMAND HAS BEEN SUBMITTED AND THE SIZE OF THE METER HAS BEEN DETERMINED BY THE S.C.W.A. CONSTRUCTION OFFICE

REVISION ADDED #11 TO VAULT # BY-PASS PIPING NOTES.		BY: V.G.M. DATE: 1/29/02	CONTRACTOR COPY INSPECTOR COPY STOREKEEPER COPY		Suffolk County Water Authority 4080 Sunrise Highway Oakdale, NY 11769		NYS LICENSED STATE: N.Y. STATE PLATE: T-1, L-200-1292
Notes: -All restoration on N.Y.S. P.O.W. to be done to N.Y.S. specs. -Misc. bends & offsets may be required				PRE-CAST DT-201 METER VAULT	DT-201 VAULT- (1)		
Reference Authorizations				1st. Sketch By: Date:	Drawn By: JDN Date: 10/1/00	Town:	
Field Prep By: Insp. By:				Scale: N.T.S.	Sheet 1 Of 1	Township:	
Contractor:				Map No:	Serv. Order No:	# of Services:	Fire Dist:
In Service Date:				Main Order No:	Main Project:		
Compld. Day. By: Date:				Hydr. Order No:	Hydr. Project:		